

Nur für Forschungszwecke

Protein C inhibitor Monoklonaler Antikörper

Katalog-Nr.:CL488-66030



Allgemeine Informationen

Katalog-Nr.: CL488-66030	GenBank-Zugangsnummer: BC008915	Reinigungsmethode: Protein-A-Reinigung
Größe: 100ul , Konzentration: 1000 µg/ml von5104 Nanodrop;	GeneID (NCBI): 5104	CloneNo.: 2H6G2
Wirt: Maus	Vollständiger Name: serpin peptidase inhibitor, clade A (alpha-1 antiproteinase, antitrypsin), member 5	Empfohlene Verdünnungen: IF 1:50-1:500
Isotyp: IgG2a	Berechnete Masse: 46 kDa	Anregungs-/Emissionsmaxima-Wellenlängen: 493 nm / 522 nm
Immunogen Katalognummer: AG18094		

Anwendungen

Geprüfte Anwendungen: IF	Positivkontrollen: IF : humanes Ovarialkarzinomgewebe,
Getestete Reaktivität: Human	

Hintergrundinformationen

SERPINA5 (also called Protein C Inhibitor, PCI) is a serpin type of serine protease inhibitor that is found in many tissues and fluids in human, including blood plasma, seminal plasma and urine. PCI found in blood originates from the liver and is capable of inhibiting several serine proteases involved in the regulation of coagulation and fibrinolysis, including activated protein C, thrombin, factor Xa, various kallikreins and plasminogen activators. PCI has been found to have antimicrobial and antitumor properties and thus appears to be a multi-functional protein.

Lagerung

Lagerungsbedingungen:
Bei -20°C lagern. Vor Licht schützen.
Lagerungspuffer:
BS mit 50% Glycerin, 0,05% Proclin300, 0,5% BSA, pH 7,3.
Aliquotieren ist nicht notwendig bei -20°C Lagerung

*** 20ul-Größen enthalten 0.1% BSA

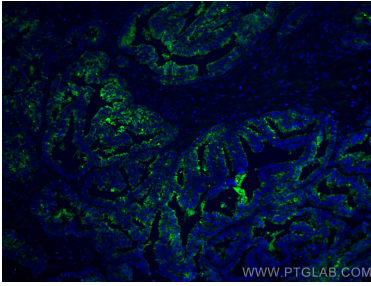
For technical support and original validation data for this product please contact:

T: 1 (888) 4PTGLAB (1-888-478-4522) (toll free in USA), or 1(312) 455-8498 (outside USA)

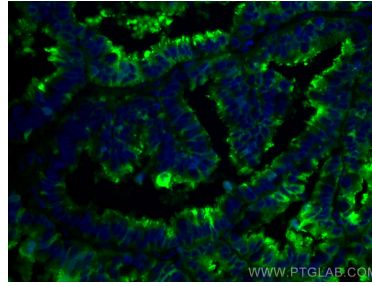
E: proteintech@ptglab.com
W: ptglab.com

This product is exclusively available under Proteintech Group brand and is not available to purchase from any other manufacturer.

Ausgewählte Validierungsdaten



Immunofluorescent analysis of (4% PFA) fixed human ovary tumor tissue using CoraLite® Plus 488 Protein C inhibitor antibody (CL488-66030, Clone: 2H6G2) at dilution of 1:200.



Immunofluorescent analysis of (4% PFA) fixed human ovary tumor tissue using CoraLite® Plus 488 Protein C inhibitor antibody (CL488-66030, Clone: 2H6G2) at dilution of 1:200.