

Nur für Forschungszwecke

# Alpha Tubulin Monoklonaler Antikörper



Katalog-Nr.: CL488-66031

3 Publikationen

## Allgemeine Informationen

<b>Katalog-Nr.:</b> CL488-66031	<b>GenBank-Zugangsnummer:</b> BC009314	<b>Reinigungsmethode:</b> Protein-A-Reinigung
<b>Größe:</b> 100ul, Konzentration: 1000 µg/ml von10376	<b>GeneID (NCBI):</b> von10376	<b>CloneNo.:</b> 1E4C11
<b>Nanodrop;</b>	<b>Vollständiger Name:</b> tubulin, alpha 1b	<b>Empfohlene Verdünnungen:</b> WB 1:300-1:600 IF 1:50-1:500
<b>Wirt:</b> Maus	<b>Berechnete Masse:</b> 50 kDa	<b>Anregungs-/Emissionsmaxima-Wellenlängen:</b> 493 nm / 522 nm
<b>Isotyp:</b> IgG2b	<b>Beobachtete Masse:</b> 50-55 kDa	
<b>Immunogen Katalognummer:</b> AG18034		

## Anwendungen

<b>Geprüfte Anwendungen:</b> FC (Intra), IF, WB	<b>Positivkontrollen:</b>
<b>In Publikationen genannte Anwendungen:</b> IF	<b>WB :</b> HepG2-Zellen, HEK-293-Zellen, HeLa-Zellen, NIH/3T3-Zellen
<b>Getestete Reaktivität:</b> Human, Hund, Maus, Ratte	<b>IF :</b> HeLa-Zellen, Mausembryogewebe
<b>Zitierte Arten:</b> Human	

## Hintergrundinformationen

There are five tubulins in human cells: alpha, beta, gamma, delta, and epsilon. Tubulins are conserved across species. They form heterodimers, which multimerize to form a microtubule filament. An alpha and beta tubulin heterodimer is the basic structural unit of microtubules. The heterodimer does not come apart once formed. The alpha and beta tubulins, which are each about 55 kDa MW, are homologous but not identical. Alpha tubulin is useful for scientists across fields as an internal control due to its high, ubiquitous expression pattern. Tubulin expression may vary according to resistance to antimicrobial and antimetabolic drugs. This antibody is CL488(Ex/Em 488 nm/515 nm) conjugated.

## Bemerkenswerte Veröffentlichungen

Verfasser	Pubmed ID	Journal	Anwendung
Xueguang Zhang	31571197	Clin Genet	
Chuan Jiang	33968654	Transl Androl Urol	IF
Yaoqiu Wu	36638901	Free Radic Biol Med	IF

## Lagerung

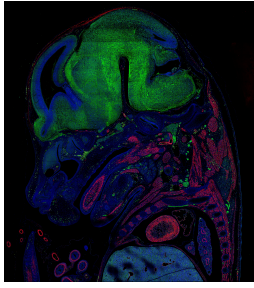
**Lagerungsbedingungen:**  
Bei -20°C lagern. Vor Licht schützen. Nach dem Versand ein Jahr stabil.  
**Lagerungspuffer:**  
BS mit 50% Glycerin, 0,05% Proclin300, 0,5% BSA, pH 7,3.  
**Aliquotieren ist nicht notwendig bei -20°C Lagerung**

\*\*\* 20ul-Größen enthalten 0.1% BSA

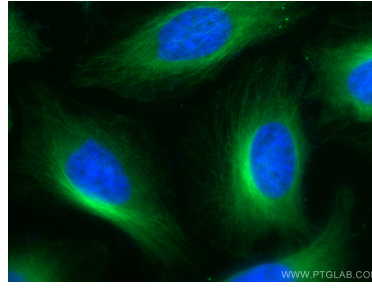
For technical support and original validation data for this product please contact:  
T: 1 (888) 4PTGLAB (1-888-478-4522) (toll free in USA), or 1(312) 455-8498 (outside USA)  
E: proteintech@ptglab.com  
W: ptglab.com

This product is exclusively available under Proteintech Group brand and is not available to purchase from any other manufacturer.

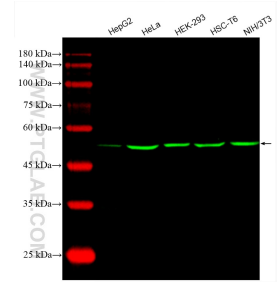
## Ausgewählte Validierungsdaten



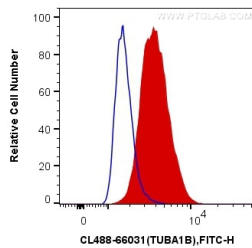
E14.5 FFPE mouse embryo section stained for smooth muscle actin (red, Cat. No 80008-1-RR) and alpha tubulin (green, Cat. CL488-66031). The alpha tubulin was conjugated to CoraLite-488 fluorescent dye. In red, you can see muscle tissue clearly stained including the tongue, heart, and arteries. Nerves and neurons are stained green since they are rich in tubulin. Image credit: @Immunofluorescence on Instagram



Immunofluorescent analysis of (4% PFA) fixed HeLa cells using the CoraLite® Plus 488-conjugated version of this antibody, CL488-66031 (alpha Tubulin antibody), at dilution of 1:100.



Various lysates were subjected to SDS PAGE followed by western blot with CL488-66031 (Alpha Tubulin antibody) at dilution of 1:500 incubated at room temperature for 1.5 hours.



1X10<sup>6</sup> HepG2 cells were intracellularly stained with 0.4 ug CoraLite® Plus 488 Anti-Human Alpha Tubulin (CL488-66031, Clone:1E4C11) (red), or 0.4 ug Control Antibody. Cells were fixed with 4% PFA and permeabilized with Flow Cytometry Perm Buffer (PF00011-C).