

## Allgemeine Informationen

|   |  |  |
|---|--|--|
| <b>Katalog-Nr.:</b><br>CL488-66040                                      | <b>GenBank-Zugangsnummer:</b><br>BC007924                    | <b>Reinigungsmethode:</b><br>Protein-G-Reinigung                   |
| <b>Größe:</b><br>100ul , Konzentration: 1000 µg/ml von2288<br>Nanodrop; | <b>GeneID (NCBI):</b><br>von2288                             | <b>CloneNo.:</b><br>1B5F1  |
| <b>Wirt:</b><br>Maus  | <b>Vollständiger Name:</b><br>FK506 binding protein 4, 59kDa | <b>Empfohlene Verdünnungen:</b><br>IF 1:50-1:500                   |
| <b>Isotyp:</b><br>IgG1  | <b>Berechnete Masse:</b><br>59 kDa                           | <b>Anregungs-/Emissionsmaxima-Wellenlängen:</b><br>493 nm / 522 nm |
| <b>Immunogen Katalognummer:</b><br>AG18704                              | <b>Beobachtete Masse:</b><br>56 kDa                          |  |

## Anwendungen

|  |  |
|--|--|
| <b>Geprüfte Anwendungen:</b><br>FC (Intra), IF | <b>Positivkontrollen:</b><br>IF : HeLa-Zellen, |
| <b>Getestete Reaktivität:</b><br>Human         |  |

## Hintergrundinformationen

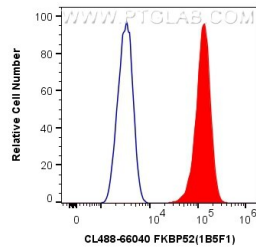
FKBP52 (FK506 binding protein 4) is a member of the immunophilin protein family that comprises intracellular protein effectors of immunosuppressive drugs, and it is known as a steroid receptor-associated protein. As a novel regulator of microtubule dynamics, FKBP52 is associated with the motor protein dynein and with the cytoskeleton during mitosis. FKBP52 is highly expressed in CNS regions susceptible to Alzheimer's, and plays a role in modulating toxicity of Abeta peptides. The protein can associate with the Tau function, and may help to decipher and modulate the events involved in Tau-induced neurodegeneration. In addition, FKBP52 is likely to play a role in growth and development of the male genitalia.

## Lagerung

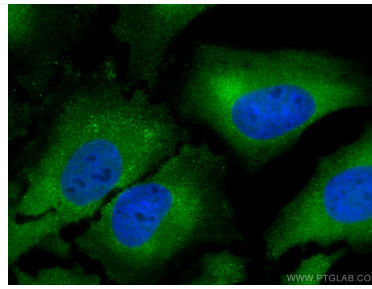
**Lagerungsbedingungen:**  
Bei -20°C lagern. Vor Licht schützen. Nach dem Versand ein Jahr stabil.  
**Lagerungspuffer:**  
BS mit 50% Glycerin, 0,05% Proclin300, 0,5% BSA, pH 7,3.  
**Aliquotieren ist nicht notwendig bei -20°C Lagerung**

**\*\*\* 20ul-Größen enthalten 0.1% BSA**

## Ausgewählte Validierungsdaten



1X10<sup>6</sup> HeLa cells were intracellularly stained with 0.4 ug CoraLite® Plus 488 Anti-Human FKBP52 (CL488-66040, Clone:1B5F1) (red), or 0.4 ug Control Antibody. Cells were fixed with 4% PFA and permeabilized with Flow Cytometry Perm Buffer (PF00011-C).



Immunofluorescent analysis of (4% PFA) fixed HeLa cells using CoraLite® Plus 488 FKBP52 antibody (CL488-66040, Clone: 1B5F1 ) at dilution of 1:200.