

Nur für Forschungszwecke

LONP1 Monoklonaler Antikörper

Katalog-Nr.:CL488-66043



Allgemeine Informationen

Katalog-Nr.: CL488-66043	GenBank-Zugangsnummer: BC000235	Reinigungsmethode: Protein-G-Reinigung
Größe: 100ul , Konzentration: 1000 µg/ml von9361	GeneID (NCBI): von9361	CloneNo.: 1C6C12
Nanodrop;	Vollständiger Name: Lon peptidase 1, mitochondrial	Empfohlene Verdünnungen: IF 1:200-1:800
Wirt: Maus	Berechnete Masse: 106 kDa	Anregungs-/Emissionsmaxima-Wellenlängen: 493 nm / 522 nm
Isotyp: IgG1	Beobachtete Masse: 100 kDa	
Immunogen Katalognummer: AG7306		

Anwendungen

Geprüfte Anwendungen: IF	Positivkontrollen: IF : C6-Zellen,
Getestete Reaktivität: Human, Maus, Ratte	

Hintergrundinformationen

LONP1(Lon protease homolog, mitochondrial) is also named as LONP, LONHS, HLON, LON, PRSS15, PIM1, MGC1498 and belongs to the peptidase S16 family. It seems to play a major role in the elimination of oxidatively modified proteins in the mitochondrial matrix(PMID:18021745). LONP1, also a nuclearly encoded and mitochondrially located stress-responsive protease, is involved in heme-mediated ALAS-1 turnover(PMID:21659532). It recognizes specific surface determinants or folds, initiates proteolysis at solvent-accessible sites, and generates unfolded polypeptides that are then processively degraded(PMID:15870080).

Lagerung

Lagerungsbedingungen:
Bei -20°C lagern. Vor Licht schützen. Nach dem Versand ein Jahr stabil.
Lagerungspuffer:
BS mit 50% Glycerin, 0,05% Proclin300, 0,5% BSA, pH 7,3.
Aliquotieren ist nicht notwendig bei -20°C Lagerung

***** 20ul-Größen enthalten 0.1% BSA**

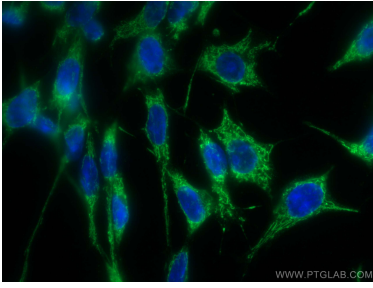
For technical support and original validation data for this product please contact:

T: 1 (888) 4PTGLAB (1-888-478-4522) (toll free in USA), or 1(312) 455-8498 (outside USA)

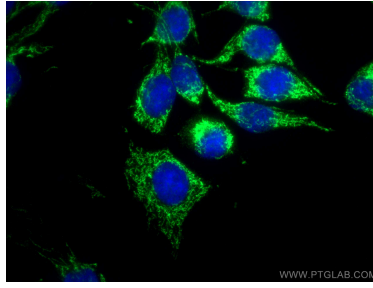
E: proteintech@ptglab.com
W: ptglab.com

This product is exclusively available under Proteintech Group brand and is not available to purchase from any other manufacturer.

Ausgewählte Validierungsdaten



Immunofluorescent analysis of (-20°C Ethanol) fixed C6 cells using CoraLite® Plus 488 LONP1 antibody (CL488-66043, Clone: 1C6C12) at dilution of 1:400.



Immunofluorescent analysis of (-20°C Ethanol) fixed C6 cells using CoraLite® Plus 488 LONP1 antibody (CL488-66043, Clone: 1C6C12) at dilution of 1:400.