

Nur für Forschungszwecke

# CD31 Monoklonaler Antikörper

Katalog-Nr.:CL488-66065



## Allgemeine Informationen

<b>Katalog-Nr.:</b> CL488-66065	<b>GenBank-Zugangsnummer:</b> BC022512	<b>Reinigungsmethode:</b> Protein-A-Reinigung
<b>Größe:</b> 100ul , Konzentration: 1000 µg/ml von5175 Nanodrop;	<b>GeneID (NCBI):</b> platelet/endothelial cell adhesion molecule	<b>CloneNo.:</b> 3F8E2
<b>Wirt:</b> Maus	<b>Vollständiger Name:</b> platelet/endothelial cell adhesion molecule	<b>Empfohlene Verdünnungen:</b> IF 1:50-1:500
<b>Isotyp:</b> IgG1	<b>Berechnete Masse:</b> 83 kDa	<b>Anregungs-/Emissionsmaxima- Wellenlängen:</b> 493 nm / 522 nm
<b>Immunogen Katalognummer:</b> AG1787		

## Anwendungen

<b>Geprüfte Anwendungen:</b> FC, IF	<b>Positivkontrollen:</b> IF : Lymphendothelzellen Zellen, humanes Kolonkarzinomgewebe, humanes Tonsillitgewebe
<b>Getestete Reaktivität:</b> Human	

## Hintergrundinformationen

Platelet endothelial cell adhesion molecule-1 (PECAM-1, CD31) is a member of the immunoglobulin gene superfamily of cell adhesion molecules. CD31 is a transmembrane glycoprotein that is highly expressed on the surface of the endothelium, making up a large portion of its intracellular junctions. PECAM-1 is also present on the surface of hematopoietic cells and immune cells including platelets, monocytes, neutrophils, natural killer cells, megakaryocytes and some types of T-cell (PMID: 9011572). As well as its role in cell-cell adhesion, PECAM-1 functions as a signaling receptor, and is involved in important physiological events such as nitric oxide production, regulation of T-cell immunity and tolerance, leukocyte transendothelial migration and inflammation and angiogenesis (PMID: 21183735; 20978210; 17872453; 20634489). This antibody is conjugated with CL488, Ex/Em 488 nm/515 nm.

## Lagerung

**Lagerungsbedingungen:**  
Bei -20°C lagern. Vor Licht schützen. Nach dem Versand ein Jahr stabil.  
**Lagerungspuffer:**  
BS mit 50% Glycerin, 0,05% Proclin300, 0,5% BSA, pH 7,3.  
**Aliquotieren ist nicht notwendig bei -20°C Lagerung**

**\*\*\* 20ul-Größen enthalten 0.1% BSA**

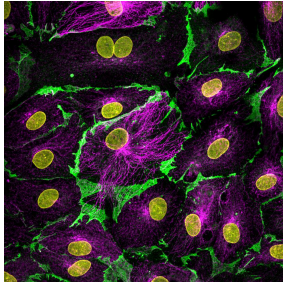
For technical support and original validation data for this product please contact:

T: 1 (888) 4PTGLAB (1-888-478-4522) (toll free  
in USA), or 1(312) 455-8498 (outside USA)

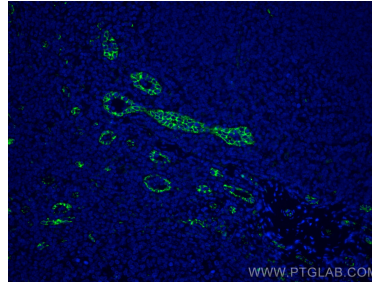
E: [proteintech@ptglab.com](mailto:proteintech@ptglab.com)  
W: [ptglab.com](http://ptglab.com)

**This product is exclusively available under Proteintech Group brand and is not available to purchase from any other manufacturer.**

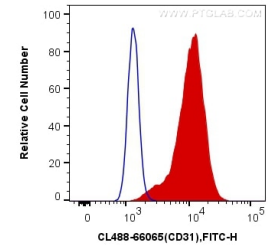
## Ausgewählte Validierungsdaten



Lymphatic endothelial cells were stained for CD31 (green, Cat. No CL488-66065, 1:200) and alpha tubulin (magenta, Cat. 11224-1-AP, 1:200) with DAPI as a counterstain for visualizing the nucleus (yellow). CD31 is an endothelial cell adhesion protein and was conjugated to CoraLite-488 fluorescent dye to allow for direct visualization. Alpha tubulin is a cytoskeletal protein important in cell division and migration and was visualized with an Alexa Fluor 568 secondary antibody.



Immunofluorescent analysis of (4% PFA) fixed human tonsillitis tissue using CoraLite® Plus 488 CD31 antibody (CL488-66065, Clone: 2A1E2) at dilution of 1:400.



1X10<sup>6</sup> THP-1 cells were surface stained with 0.4 ug CoraLite® Plus 488 Anti-Human CD31 (CL488-66065, Clone:3F8E2) (red), or 0.4 ug Control Antibody. Cells were not fixed.