

Nur für Forschungszwecke

# UBE2C Monoklonaler Antikörper

Katalog-Nr.:CL488-66087



## Allgemeine Informationen

<b>Katalog-Nr.:</b> CL488-66087	<b>GenBank-Zugangsnummer:</b> BC016292	<b>Reinigungsmethode:</b> Protein-G-Reinigung
<b>Größe:</b> 100ul , Konzentration: 1000 µg/ml von11065 Nanodrop;	<b>GeneID (NCBI):</b> 11065	<b>CloneNo.:</b> 1C12H8
<b>Wirt:</b> Maus	<b>Vollständiger Name:</b> ubiquitin-conjugating enzyme E2C	<b>Empfohlene Verdünnungen:</b> IF 1:50-1:500
<b>Isotyp:</b> IgG1	<b>Berechnete Masse:</b> 179 aa, 20 kDa	<b>Anregungs-/Emissionsmaxima- Wellenlängen:</b> 493 nm / 522 nm
<b>Immunogen Katalognummer:</b> AG19235	<b>Beobachtete Masse:</b> 20 kDa	

## Anwendungen

<b>Geprüfte Anwendungen:</b> FC (Intra), IF	<b>Positivkontrollen:</b> IF : HeLa-Zellen,
<b>Getestete Reaktivität:</b> Human, Maus, Ratte	

## Hintergrundinformationen

UBE2C (Ubiquitin-conjugating enzyme E2 C) is also known as UBCH10 and belongs to the ubiquitin-conjugating enzyme family. It is highly expressed in a variety of human primary tumors, and it is able to promote cell proliferation and malignant transformation (PMID:18703417). UBE2C, along with the E3 ligase of the anaphasepromoting complex (APC), catalyzes the ubiquitination of mitotic cyclins A and B, as well as securin. UBE2C is essential for cell cycle progression, and mutation of its active site cysteine confers a dominant-negative phenotype (PMID:17217624).

## Lagerung

**Lagerungsbedingungen:**  
Bei -20°C lagern. Vor Licht schützen. Nach dem Versand ein Jahr stabil.  
**Lagerungspuffer:**  
BS mit 50% Glycerin, 0,05% Proclin300, 0,5% BSA, pH 7,3.  
Aliquotieren ist nicht notwendig bei -20°C Lagerung

**\*\*\* 20ul-Größen enthalten 0.1% BSA**

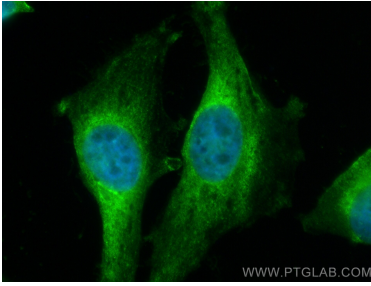
For technical support and original validation data for this product please contact:

T: 1 (888) 4PTGLAB (1-888-478-4522) (toll free  
in USA), or 1(312) 455-8498 (outside USA)

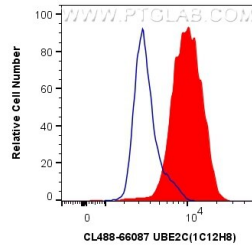
E: [proteintech@ptglab.com](mailto:proteintech@ptglab.com)  
W: [ptglab.com](http://ptglab.com)

**This product is exclusively available under Proteintech Group brand and is not available to purchase from any other manufacturer.**

## Ausgewählte Validierungsdaten



Immunofluorescent analysis of (4% PFA) fixed HeLa cells using CoraLite® Plus 488 UBE2C antibody (CL488-66087, Clone: 1C12H8) at dilution of 1:200.



1X10<sup>6</sup> HeLa cells were intracellularly stained with 0.4 ug CoraLite® Plus 488 Anti-Human UBE2C (CL488-66087, Clone:1C12H8) (red), or 0.4 ug Control Antibody. Cells were fixed and permeabilized with Transcription Factor Staining Buffer Kit (PF00011).