

Nur für Forschungszwecke

# ACTC1-specific Monoklonaler Antikörper

Katalog-Nr.:CL488-66125



## Allgemeine Informationen

<b>Katalog-Nr.:</b> CL488-66125	<b>GenBank-Zugangsnummer:</b> NM_005159	<b>Reinigungsmethode:</b> Protein-G-Reinigung
<b>Größe:</b> 100ul , Konzentration: 1000 µg/ml von70 Nanodrop;	<b>GeneID (NCBI):</b> actin, alpha, cardiac muscle 1	<b>CloneNo.:</b> 1F2B9
<b>Wirt:</b> Maus	<b>Vollständiger Name:</b> actin, alpha, cardiac muscle 1	<b>Empfohlene Verdünnungen:</b> IF 1:50-1:500
<b>Isotyp:</b> IgG1	<b>Berechnete Masse:</b> 42 kDa	<b>Anregungs-/Emissionsmaxima-Wellenlängen:</b> 493 nm / 522 nm

## Anwendungen

<b>Geprüfte Anwendungen:</b> IF	<b>Positivkontrollen:</b> IF : Mausherzgewebe,
<b>Getestete Reaktivität:</b> Hausschwein, Human, Maus, Ratte	

## Hintergrundinformationen

Actins are highly conserved proteins that are involved in various types of cell motility and are ubiquitously expressed in all eukaryotic cells. The ACTC1 gene encodes cardiac muscle alpha-actin, the predominant actin isoform in adult heart, which interacts with a variety of proteins to produce the force for muscle contraction. This antibody is specific to the ACTC1. It does not cross-react with other actin isoforms. The antibody is conjugated with CL488, Ex/Em 488 nm/515 nm.

## Lagerung

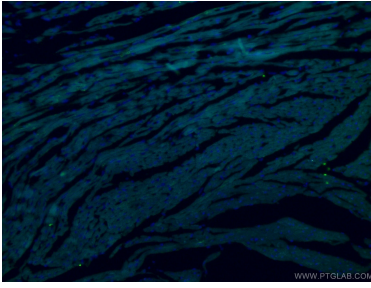
**Lagerungsbedingungen:**  
Bei -20°C lagern. Vor Licht schützen. Nach dem Versand ein Jahr stabil.  
**Lagerungspuffer:**  
BS mit 50% Glycerin, 0,05% Proclin300, 0,5% BSA, pH 7,3.  
Aliquotieren ist nicht notwendig bei -20°C Lagerung

\*\*\* 20ul-Größen enthalten 0.1% BSA

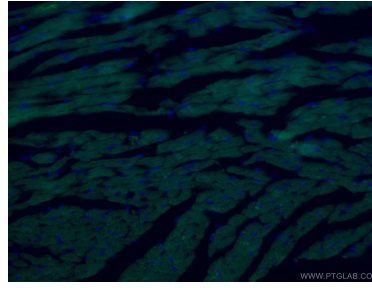
For technical support and original validation data for this product please contact:  
T: 1 (888) 4PTGLAB (1-888-478-4522) (toll free in USA), or 1(312) 455-8498 (outside USA)  
E: proteintech@ptglab.com  
W: ptglab.com

This product is exclusively available under Proteintech Group brand and is not available to purchase from any other manufacturer.

## Ausgewählte Validierungsdaten



Immunofluorescent analysis of (4% PFA) fixed mouse heart tissue using CL488-66125 (ACTC1-specific antibody) at dilution of 1:100.



Immunofluorescent analysis of (4% PFA) fixed mouse heart tissue using CL488-66125 (ACTC1-specific antibody) at dilution of 1:100.