

Nur für Forschungszwecke

Alpha-2-Macroglobulin Monoklonaler Antikörper



Katalog-Nr.:CL488-66126

Allgemeine Informationen

Katalog-Nr.: CL488-66126	GenBank-Zugangsnummer: BC040071	Reinigungsmethode: Protein-A-Reinigung
Größe: 100ul , Konzentration: 1000 µg/ml von2 Nanodrop;	GeneID (NCBI): alpha-2-macroglobulin	CloneNo.: 4B11F7
Wirt: Maus	Vollständiger Name: alpha-2-macroglobulin	Empfohlene Verdünnungen: IF 1:50-1:500
Isotyp: IgG2a	Berechnete Masse: 1474 aa, 163 kDa	Anregungs-/Emissionsmaxima- Wellenlängen: 493 nm / 522 nm
Immunogen Katalognummer: AG19245		

Anwendungen

Geprüfte Anwendungen: IF	Positivkontrollen: IF : HepG2-Zellen,
Getestete Reaktivität: Human	

Hintergrundinformationen

alpha-2-macroglobulin, also known as α2-macroglobulin (α2M and A2M), is a protein abundant in the plasma of vertebrates and several invertebrates. A2M is an evolutionarily conserved arm of the innate immune system. It also mediates the proliferation of T cells and macrophages. A2M acts as a nonspecific protease inhibitor involved in the host defense mechanism that inactivates both endogenous and exogenous proteases, including trypsin, thrombin and collagenase. Even though A2M is produced predominantly by the liver, it may also be expressed in the reproductive tract, heart, and brain, and may have important roles in many physiological processes and medical illnesses including Alzheimer's disease.

Lagerung

Lagerungsbedingungen:
Bei -20°C lagern. Vor Licht schützen. Nach dem Versand ein Jahr stabil.
Lagerungspuffer:
BS mit 50% Glycerin, 0,05% Proclin300, 0,5% BSA, pH 7,3.
Aliquotieren ist nicht notwendig bei -20°C Lagerung

*** 20ul-Größen enthalten 0.1% BSA

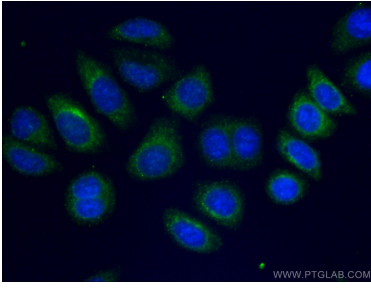
For technical support and original validation data for this product please contact:

T: 1 (888) 4PTGLAB (1-888-478-4522) (toll free
in USA), or 1(312) 455-8498 (outside USA)

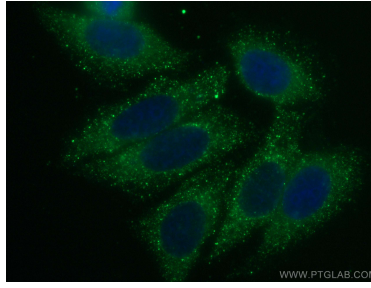
E: proteintech@ptglab.com
W: ptglab.com

This product is exclusively available under Proteintech Group brand and is not available to purchase from any other manufacturer.

Ausgewählte Validierungsdaten



Immunofluorescent analysis of (-20°C Ethanol) fixed HepG2 cells using CL488-66126 (Alpha-2-macroglobulin antibody) at dilution of 1:100.



Immunofluorescent analysis of (-20°C Ethanol) fixed HepG2 cells using CoraLite® Plus 488 Alpha-2-Macroglobulin antibody (CL488-66126, Clone: 4B11F7) at dilution of 1:200.