

Nur für Forschungszwecke

RPL3 Monoklonaler Antikörper

Katalog-Nr.:CL488-66130



Allgemeine Informationen

Katalog-Nr.: CL488-66130	GenBank-Zugangsnummer: BC012786	Reinigungsmethode: Protein-G-Reinigung
Größe: 100ul , Konzentration: 1000 µg/ml von6122 Nanodrop;	GeneID (NCBI): Vollständiger Name: ribosomal protein L3	CloneNo.: 2G1B8
Wirt: Maus	Berechnete Masse: 46/27 kDa	Empfohlene Verdünnungen: IF 1:50-1:500
Isotyp: IgG1	Beobachtete Masse: 46 kDa	Anregungs-/Emissionsmaxima- Wellenlängen: 493 nm / 522 nm
Immunogen Katalognummer: AG20400		

Anwendungen

Geprüfte Anwendungen: IF	Positivkontrollen: IF : HepG2-Zellen,
Getestete Reaktivität: Human, Maus, Ratte	

Hintergrundinformationen

Ribosomes, the complexes that catalyze protein synthesis, consist of a small 40S subunit and a large 60S subunit. Together these subunits are composed of 4 RNA species and approximately 80 structurally distinct proteins. RPL3, also named as TARBP-B and MGC104284, belongs to the ribosomal protein L3P family. This protein is a component of the 60S subunit. It can bind to the HIV-1 TAR mRNA, and it has been suggested that the protein contributes to tat-mediated transactivation. As is typical for genes encoding ribosomal proteins, there are multiple processed pseudogenes of this gene dispersed through the genome.

Lagerung

Lagerungsbedingungen:
Bei -20°C lagern. Vor Licht schützen. Nach dem Versand ein Jahr stabil.
Lagerungspuffer:
BS mit 50% Glycerin, 0,05% Proclin300, 0,5% BSA, pH 7,3.
Aliquotieren ist nicht notwendig bei -20°C Lagerung

***** 20ul-Größen enthalten 0.1% BSA**

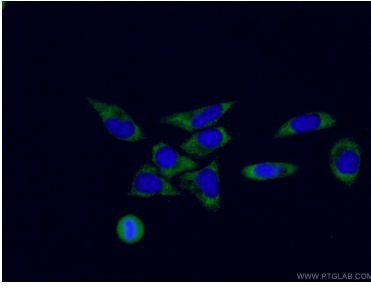
For technical support and original validation data for this product please contact:

T: 1 (888) 4PTGLAB (1-888-478-4522) (toll free
in USA), or 1(312) 455-8498 (outside USA)

E: proteintech@ptglab.com
W: ptglab.com

This product is exclusively available under Proteintech Group brand and is not available to purchase from any other manufacturer.

Ausgewählte Validierungsdaten



Immunofluorescent analysis of (-20°C Ethanol) fixed HepG2 cells using CL488-66130 (RPL3 antibody) at dilution of 1:50.