

Nur für Forschungszwecke

# HBE1-Specific Monoklonaler Antikörper

Katalog-Nr.:CL488-66151



## Allgemeine Informationen

<b>Katalog-Nr.:</b> CL488-66151	<b>GenBank-Zugangsnummer:</b> NM_005330	<b>Reinigungsmethode:</b> Protein-G-Reinigung
<b>Größe:</b> 100ul, Konzentration: 1000 µg/ml von3046	<b>GeneID (NCBI):</b> 3046	<b>CloneNo.:</b> 2C11G6
<b>Nanodrop;</b>	<b>Vollständiger Name:</b> hemoglobin, epsilon 1	<b>Anregungs-/Emissionsmaxima-Wellenlängen:</b> 493 nm / 522 nm
<b>Wirt:</b> Maus	<b>Beobachtete Masse:</b> 16 kDa	
<b>Isotyp:</b> IgG1		

## Anwendungen

**Geprüfte Anwendungen:**  
FC (Intra)

**Getestete Reaktivität:**  
Human

## Hintergrundinformationen

The hemoglobin molecule is a tetramer consisting of two  $\alpha$ -globin-like polypeptide chains and two  $\beta$ -globin-like chains. The human hemoglobin genes are expressed in a tightly developmentally controlled fashion.  $\epsilon$ -globin (HBE1) is the predominantly expressed gene during the embryonic stage. The epsilon hemoglobin chain seems to be the best marker for fetal nucleated red blood cells (NRBCs). Anti-HBE1 may be used to label and isolate fetal cells from maternal blood and can be useful in prenatal diagnosis. This antibody specifically recognizes the HBE1 and doesn't cross-react with other globin chains.

## Lagerung

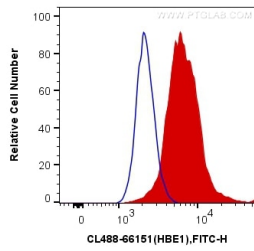
**Lagerungsbedingungen:**  
Bei -20°C lagern. Vor Licht schützen. Nach dem Versand ein Jahr stabil.  
**Lagerungspuffer:**  
BS mit 50% Glycerin, 0,05% Proclin300, 0,5% BSA, pH 7,3.  
**Aliquotieren ist nicht notwendig bei -20°C Lagerung**

**\*\*\* 20ul-Größen enthalten 0.1% BSA**

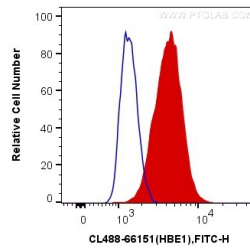
For technical support and original validation data for this product please contact:  
T: 1 (888) 4PTGLAB (1-888-478-4522) (toll free in USA), or 1(312) 455-8498 (outside USA)  
E: proteintech@ptglab.com  
W: ptglab.com

This product is exclusively available under Proteintech Group brand and is not available to purchase from any other manufacturer.

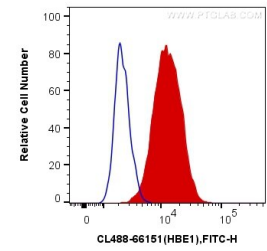
## Ausgewählte Validierungsdaten



1X10<sup>6</sup> K-562 cells were intracellularly stained with 0.4 ug CoraLite® Plus 488 Anti-Human HBE1-Specific (CL488-66151, Clone:2C11G6) (red), or 0.4 ug Mouse IgG1 Isotype Control (CL488-66360, Clone: T1F8D3F10) (blue). Cells were fixed with 4% PFA and permeabilized with Flow Cytometry Perm Buffer (PF00011-C).



1X10<sup>6</sup> SH-SY5Y cells were intracellularly stained with 0.4 ug CoraLite® Plus 488 Anti-Human HBE1-Specific (CL488-66151, Clone:2C11G6) (red), or 0.4 ug Mouse IgG1 Isotype Control (CL488-66360, Clone: T1F8D3F10) (blue). Cells were fixed with 4% PFA and permeabilized with Flow Cytometry Perm Buffer (PF00011-C).



1X10<sup>6</sup> THP-1 cells were intracellularly stained with 0.4 ug CoraLite® Plus 488 Anti-Human HBE1-Specific (CL488-66151, Clone:2C11G6) (red), or 0.4 ug Mouse IgG1 Isotype Control (CL488-66360, Clone: T1F8D3F10) (blue). Cells were fixed with 4% PFA and permeabilized with Flow Cytometry Perm Buffer (PF00011-C).