

Nur für Forschungszwecke

# Caspase 9/p35/p10 Monoklonaler Antikörper



Katalog-Nr.:CL488-66169

## Allgemeine Informationen

<b>Katalog-Nr.:</b> CL488-66169	<b>GenBank-Zugangsnummer:</b> BC002452	<b>Reinigungsmethode:</b> Protein-A-Reinigung
<b>Größe:</b> 100ul , Konzentration: 1000 µg/ml von842 Nanodrop;	<b>GeneID (NCBI):</b> 187G2	<b>CloneNo.:</b> 1B7G2
<b>Wirt:</b> Maus	<b>Vollständiger Name:</b> caspase 9, apoptosis-related cysteine peptidase	<b>Empfohlene Verdünnungen:</b> IF 1:50-1:500
<b>Isotyp:</b> IgG2b	<b>Berechnete Masse:</b> 46 kDa	<b>Anregungs-/Emissionsmaxima-Wellenlängen:</b> 493 nm / 522 nm
<b>Immunogen Katalognummer:</b> AG20813	<b>Beobachtete Masse:</b> 46 kDa, 35 kDa	

## Anwendungen

<b>Geprüfte Anwendungen:</b> FC (Intra), IF	<b>Positivkontrollen:</b> IF : HeLa-Zellen,
<b>Getestete Reaktivität:</b> Human, Maus	

## Hintergrundinformationen

Caspase 9, apoptosis-related cysteine protease (CASP9, synonyms: MCH6, APAF3, APAF-3, ICE-LAP6, CASPASE-9c) is a member of the cysteine-aspartic acid protease (caspase) family. Sequential activation of caspases plays a central role in the execution-phase of cell apoptosis. Caspases exist as inactive proenzymes which undergo proteolytic processing at conserved aspartic residues to produce 2 subunits, large and small, that dimerize to form the active enzyme. Caspase 9 is processed by caspase APAF1; this step is thought to be one of the earliest in the caspase activation cascade.

## Lagerung

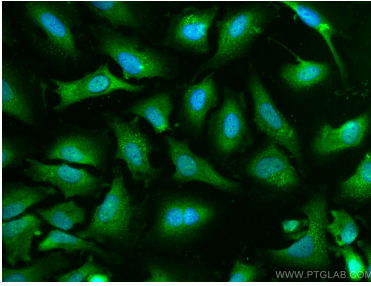
**Lagerungsbedingungen:**  
Bei -20°C lagern. Vor Licht schützen. Nach dem Versand ein Jahr stabil.  
**Lagerungspuffer:**  
BS mit 50% Glycerin, 0,05% Proclin300, 0,5% BSA, pH 7,3.  
**Aliquotieren ist nicht notwendig bei -20°C Lagerung**

**\*\*\* 20ul-Größen enthalten 0.1% BSA**

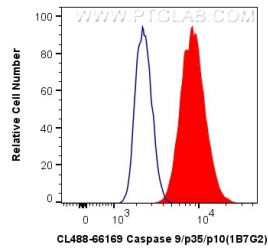
For technical support and original validation data for this product please contact:  
T: 1 (888) 4PTGLAB (1-888-478-4522) (toll free in USA), or 1(312) 455-8498 (outside USA)  
E: proteintech@ptglab.com  
W: ptglab.com

**This product is exclusively available under Proteintech Group brand and is not available to purchase from any other manufacturer.**

## Ausgewählte Validierungsdaten



Immunofluorescent analysis of (-20°C Ethanol) fixed HeLa cells using CoraLite® Plus 488 Caspase 9/p35/p10 antibody (CL488-66169, Clone: 1B7G2) at dilution of 1:200.



1X10<sup>6</sup> HepG2 cells were intracellularly stained with 0.4 ug CoraLite® Plus 488 Anti-Human Caspase 9/p35/p10 (CL488-66169, Clone:1B7G2) (red), or 0.4 ug Mouse IgG2b Isotype Control (CL488-66360-3, Clone: K11B8C4B5) (blue). Cells were fixed with 4% PFA and permeabilized with Flow Cytometry Perm Buffer (PF00011-C).