

Nur für Forschungszwecke

# Cytokeratin 18 Monoklonaler Antikörper

Katalog-Nr.:CL488-66187



## Allgemeine Informationen

|   |   |  |
|---|---|--|
| <b>Katalog-Nr.:</b><br>CL488-66187  | <b>GenBank-Zugangsnummer:</b><br>BC000180 | <b>Reinigungsmethode:</b><br>Protein-G-Reinigung                   |
| <b>Größe:</b><br>100ul , Konzentration: 1000 µg/ml durch die Bradford-Methode mit BSA als Standard; | <b>GeneID (NCBI):</b><br>3875             | <b>CloneNo.:</b><br>1G11C4   |
| <b>Wirt:</b><br>Maus  | <b>Vollständiger Name:</b><br>keratin 18  | <b>Empfohlene Verdünnungen:</b><br>IF 1:50-1:500                   |
| <b>Isotyp:</b><br>IgG1  | <b>Berechnete Masse:</b><br>48 kDa        | <b>Anregungs-/Emissionsmaxima-Wellenlängen:</b><br>493 nm / 522 nm |
| <b>Immunogen Katalognummer:</b><br>AG1260   |   |  |

## Anwendungen

|  |  |
|--|--|
| <b>Geprüfte Anwendungen:</b><br>FC (Intra), IF | <b>Positivkontrollen:</b><br>IF : HeLa-Zellen, HepG2-Zellen, MDCK-Zellen |
| <b>Getestete Reaktivität:</b><br>Human, Hund   |  |

## Hintergrundinformationen

Keratins are a large family of proteins that form the intermediate filament cytoskeleton of epithelial cells, which are classified into two major sequence types. Type I keratins are a group of acidic intermediate filament proteins, including K9-K23, and the hair keratins Ha1-Ha8. Type II keratins are the basic or neutral counterparts to the acidic type I keratins, including K1-K8, and the hair keratins, Hb1-Hb6. KRT18, also named as CYK18, PIG46 and K18, is the most commonly found members of the intermediate filament gene family. KRT18 is a type I keratin which is found primarily in non squamous epithelia and is present in a majority of adenocarcinomas and ductal carcinomas but not in squamous cell carcinomas. The antibody is conjugated with CL488, Ex/Em 488 nm/515 nm.

## Lagerung

**Lagerungsbedingungen:**  
Bei -20°C lagern. Vor Licht schützen. Nach dem Versand ein Jahr stabil.  
**Lagerungspuffer:**  
BS mit 50% Glycerin, 0,05% Proclin300, 0,5% BSA, pH 7,3.  
**Aliquotieren ist nicht notwendig bei -20°C Lagerung**

**\*\*\* 20ul-Größen enthalten 0.1% BSA**

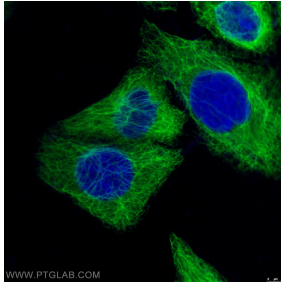
For technical support and original validation data for this product please contact:

T: 1 (888) 4PTGLAB (1-888-478-4522) (toll free in USA), or 1(312) 455-8498 (outside USA)

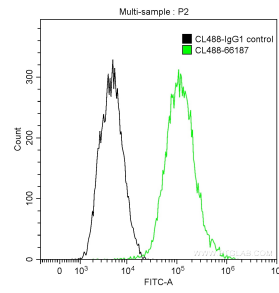
E: [proteintech@ptglab.com](mailto:proteintech@ptglab.com)  
W: [ptglab.com](http://ptglab.com)

**This product is exclusively available under Proteintech Group brand and is not available to purchase from any other manufacturer.**

## Ausgewählte Validierungsdaten



Immunofluorescent analysis of (-20°C Ethanol) fixed HeLa cells using CL488-66187 (Cytokeratin 18 antibody) at dilution of 1:100.



1X10<sup>6</sup> HeLa cells were intracellularly stained with 0.2 ug CoraLite® Plus 488 Anti-Human Cytokeratin 18 (CL488-66187, Clone:1G11C4) (green), and 0.2 ug Mouse IgG1 Isotype Control (CL488-66360, Clone: T1F8D3F10) (black). Cells were fixed with 4% PFA and permeabilized with 0.1% TritonX-100.