

Nur für Forschungszwecke

# INS Monoklonaler Antikörper

Katalog-Nr.:CL488-66198



## Allgemeine Informationen

<b>Katalog-Nr.:</b> CL488-66198	<b>GenBank-Zugangsnummer:</b> BC005255	<b>Reinigungsmethode:</b> Protein-A-Reinigung
<b>Größe:</b> 100ul , Konzentration: 1000 µg/ml von3630 Nanodrop;	<b>GeneID (NCBI):</b> 3630	<b>CloneNo.:</b> 4B6A7
<b>Wirt:</b> Maus	<b>Vollständiger Name:</b> INS	<b>Empfohlene Verdünnungen:</b> IF 1:200-1:800
<b>Isotyp:</b> IgG2a	<b>Berechnete Masse:</b> 110 aa, 12 kDa	<b>Anregungs-/Emissionsmaxima- Wellenlängen:</b> 493 nm / 522 nm
<b>Immunogen Katalognummer:</b> AG8630		

## Anwendungen

<b>Geprüfte Anwendungen:</b> IF	<b>Positivkontrollen:</b> IF : Maus-Pankreasgewebe,
<b>Getestete Reaktivität:</b> Human, Maus, Ratte	

## Hintergrundinformationen

INS is a peptide hormone, produced by beta cells of the pancreas, and is central to regulating carbohydrate and fat metabolism in the body. It participates in glucose utilization, protein synthesis and in the formation and storage of neutral lipids. It is synthesized as a precursor molecule, which is processed prior to secretion. A- and B-peptides are joined together by a disulfide bond to form INS, while the central portion of the precursor molecule is cleaved and released as the C-peptide. Defects in INS results in type 1 diabetes mellitus. INS may also exist 36 kDa form corresponding to the hexameric INS form.

## Lagerung

**Lagerungsbedingungen:**  
Bei -20°C lagern. Vor Licht schützen. Nach dem Versand ein Jahr stabil.  
**Lagerungspuffer:**  
BS mit 50% Glycerin, 0,05% Proclin300, 0,5% BSA, pH 7,3.  
Aliquotieren ist nicht notwendig bei -20°C Lagerung

**\*\*\* 20ul-Größen enthalten 0.1% BSA**

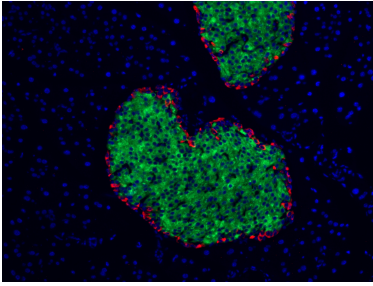
For technical support and original validation data for this product please contact:

T: 1 (888) 4PTGLAB (1-888-478-4522) (toll free  
in USA), or 1(312) 455-8498 (outside USA)

E: proteintech@ptglab.com  
W: ptglab.com

**This product is exclusively available under Proteintech Group brand and is not available to purchase from any other manufacturer.**

## Ausgewählte Validierungsdaten



Immunofluorescent analysis of (4% PFA) fixed mouse pancreas tissue using the CoraLite® Plus 488-conjugated version of this antibody, CL488-66198 (INS antibody), at dilution of 1:400. The  $\alpha$  cells of pancreas was labelled in red with 15954-1-AP (Glucagon antibody).