

Nur für Forschungszwecke

acetylated Tubulin(Lys40) Monoklonaler Antikörper



Katalog-Nr.:CL488-66200

2 Publikationen

Allgemeine Informationen

Katalog-Nr.: CL488-66200	GenBank-Zugangsnummer: NM_006009	Reinigungsmethode: Protein-G-Reinigung
Größe: 100ul , Konzentration: 1000 µg/ml von7846 Nanodrop und 1000 µg/ml durch die Bradford-Methode mit BSA als Standard;	GeneID (NCBI): 7E5H8	CloneNo.: 7E5H8
Wirt: Maus	Vollständiger Name: tubulin, alpha 1a	Empfohlene Verdünnungen: IF 1:50-1:500
Isotyp: IgG1	Berechnete Masse: 52 kDa	Anregungs-/Emissionsmaxima- Wellenlängen: 493 nm / 522 nm

Anwendungen

Geprüfte Anwendungen: IF	Positivkontrollen: IF : MDCK-Zellen, Mausnierengewebe
In Publikationen genannte Anwendungen: IF	
Getestete Reaktivität: Hausschwein, Human, Hund, Maus, Ratte	
Zitierte Arten: Human	

Hintergrundinformationen

Tubulin, composed of heterodimers of alpha and beta tubulin, is the mainly component of microtubules which play important roles in cell motility, mitosis, and intracellular vesicle transport. Both alpha and beta tubulin undergo several posttranslational modifications such as polyglutamylolation and acetylation/deacetylation. Tubulin acetylation occurs on lysine-40 at the N-terminal of alpha tubulin and is conserved across species. The histone deacetylase HDAC6 and SIRT2 has been identified as tubulin deacetylases. Reversible acetylation of alpha tubulin may be implicated in regulating microtubule stability, cell motility, and axon regeneration. The level of acetylated tubulin has been linked to epithelial malignancies and sensitivity to chemotherapy. In addition, acetylated tubulin has been widely used as a marker for primary cilia. This antibody is specific to the acetylated tubulin; it does not recognize non-acetylated tubulin. (24268707, 23881549). This antibody is conjugated with CL488, Ex/Em 488 nm/515 nm.

Bemerkenswerte Veröffentlichungen

Verfasser	Pubmed ID	Journal	Anwendung
Vincent Manna	34585152	STAR Protoc	IF
Vincent J Manna	35187520	BBA Adv	IF

Lagerung

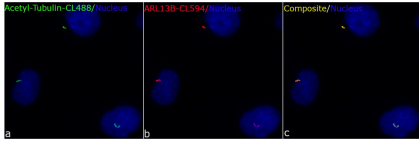
Lagerungsbedingungen:
Bei -20°C lagern. Vor Licht schützen. Nach dem Versand ein Jahr stabil.
Lagerungspuffer:
BS mit 50% Glycerin, 0,05% Proclin300, 0,5% BSA, pH 7,3.
Aliquotieren ist nicht notwendig bei -20°C Lagerung

*** 20ul-Größen enthalten 0.1% BSA

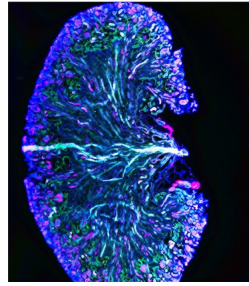
For technical support and original validation data for this product please contact:
T: 1 (888) 4PTGLAB (1-888-478-4522) (toll free in USA), or 1(312) 455-8498 (outside USA)
E: proteintech@ptglab.com
W: ptglab.com

This product is exclusively available under Proteintech Group brand and is not available to purchase from any other manufacturer.

Ausgewählte Validierungsdaten



Immunofluorescent analysis of (4% PFA) fixed MDCK cells using CL488-66200 (GREEN, acetylated Tubulin(Lys40) antibody) at dilution of 1:50 and CL594-17711 (RED, ARL13B antibody) at dilution of 1:50.



Frozen tissue section of adult mouse kidney was stained for acetylated α -tubulin (magenta, Cat. No CL488-66200), CD-31/PECAM-1 (white), and Shh (green, Cat. No 20697-1-AP) with DAPI as a counterstain for visualizing the nucleus (blue). acetylated α -tubulin stains primary cilia and was conjugated to Coralite-488 fluorescent dye and pseudocolored to magenta. CD-31 stains endocardial/endothelial cells and was visualized with an Alexa Fluor 647 secondary

