

Allgemeine Informationen

Katalog-Nr.: CL488-66211	GenBank-Zugangsnummer: BC058928	Reinigungsmethode: Protein-A-Reinigung
Größe: 100ul , Konzentration: 1000 µg/ml von290 Nanodrop;	GeneID (NCBI): 2D8D11	CloneNo.: 2D8D11
Wirt: Maus	Vollständiger Name: alanyl (membrane) aminopeptidase	Empfohlene Verdünnungen: IF 1:50-1:500
Isotyp: IgG2a	Berechnete Masse: 110 kDa	Anregungs-/Emissionsmaxima- Wellenlängen: 491 nm / 516 nm
Immunogen Katalognummer: AG5976		

Anwendungen

Geprüfte Anwendungen: FC (Intra), IF	Positivkontrollen: IF : humanes Nierengewebe,
Getestete Reaktivität: Human	

Hintergrundinformationen

CD13, also named as APN, ANPEP(aminopeptidase N) or PEPN, is a heavily glycosylated, ~150-240 kDa, type-II membrane, expressed by most cells of myeloid origin including monocytes, macrophages, granulocytes, and their hematopoietic precursors. It is also abundantly expressed in the brush border of epithelial cells from renal proximal tubules and small intestine, in prostatic epithelial cells, in bile duct canaliculi, in mast cells, and, in some cases, in fibroblasts and smooth muscle cells. CD13 is a multifunctional protein and plays varying roles in cell migration, cell proliferation, cell differentiation and so on. CD13 participates in angiogenesis generating and modulating angiogenic signals, and can be a marker of angiogenic vessels. CD13 is also a pan-myeloid marker, present on mature granulocytes and monocytes. (PMID: 8805662, 10098327, 18603472, 18097955, 17897790, 17888402, 21339174) And this antibody is conjugated with CL488(Ex/Em 488 nm/515 nm).

Lagerung

Lagerungsbedingungen:
Bei -20°C lagern. Vor Licht schützen. Nach dem Versand ein Jahr stabil.
Lagerungspuffer:
BS mit 50% Glycerin, 0,05% Proclin300, 0,5% BSA, pH 7,3.
Aliquotieren ist nicht notwendig bei -20°C Lagerung

***** 20ul-Größen enthalten 0.1% BSA**

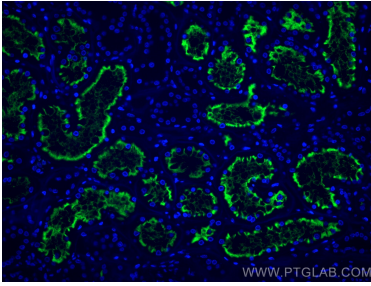
For technical support and original validation data for this product please contact:

T: 1 (888) 4PTGLAB (1-888-478-4522) (toll free
in USA), or 1(312) 455-8498 (outside USA)

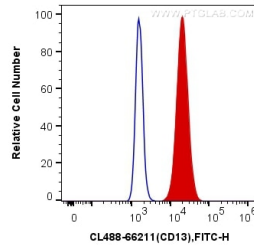
E: proteintech@ptglab.com
W: ptglab.com

This product is exclusively available under Proteintech Group brand and is not available to purchase from any other manufacturer.

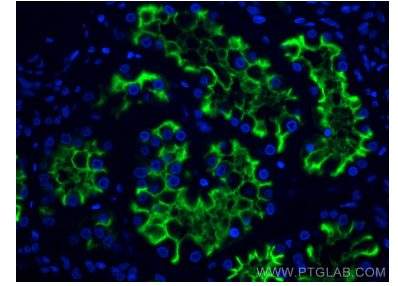
Ausgewählte Validierungsdaten



Immunofluorescent analysis of (4% PFA) fixed human kidney tissue using CoraLite®488 CD13 antibody (CL488-66211, Clone: 2D8D11) at dilution of 1:200.



1X10⁶ U-937 cells were intracellularly stained with 0.4 ug CoraLite®488 Anti-Human CD13 (CL488-66211, Clone:2D8D11) (red), or 0.4 ug Mouse IgG2a Isotype Control (CL488-66360-2, Clone: K11A1B2A2) (blue). Cells were fixed with 4% PFA and permeabilized with Flow Cytometry Perm Buffer (PF00011-C).



Immunofluorescent analysis of (4% PFA) fixed human kidney tissue using CoraLite®488 CD13 antibody (CL488-66211, Clone: 2D8D11) at dilution of 1:200.