

ORM2-Specific Monoklonaler Antikörper

Katalog-Nr.: CL488-66217

Allgemeine Informationen

Katalog-Nr.: CL488-66217	GenBank-Zugangsnummer: BC015964	Reinigungsmethode: Protein-G-Reinigung
Größe: 100ul, Konzentration: 1000 µg/ml von 5005 Nanodrop;	GeneID (NCBI): 5005	CloneNo.: 4E9H10
Wirt: Maus	Vollständiger Name: orosomucoid 2	Empfohlene Verdünnungen: IF 1:50-1:500
Isotyp: IgG1	Berechnete Masse: 24 kDa	Anregungs-/Emissionsmaxima- Wellenlängen: 493 nm / 522 nm
Immunogen Katalognummer: AG18984	Beobachtete Masse: 45 kDa	

Anwendungen

Geprüfte Anwendungen: IF	Positivkontrollen: IF : HepG2-Zellen,
Getestete Reaktivität: Human	

Hintergrundinformationen

ORM2, also named as AGP2 and OMD 2, belongs to the calycin superfamily and Lipocalin family. It functions as transport protein in the blood stream. ORM2 binds various hydrophobic ligands in the interior of its beta-barrel domain. It also binds synthetic drugs and influences their distribution and availability. ORM2 appears to function in modulating the activity of the immune system during the acute-phase reaction. ORM2 is one of the conserved endoplasmic reticulum membrane proteins which regulating lipid homeostasis and protein quality control. This antibody can specially recognize ORM2. It recognizes a band about 45 kDa in human plasma which may be due to the glycosylation of ORM2 or the dimer formation of the protein.

Lagerung

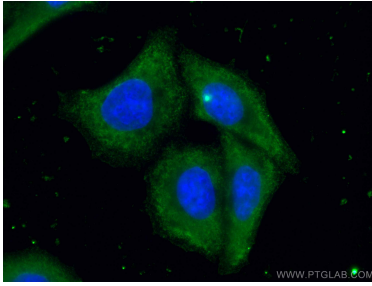
Lagerungsbedingungen:
Bei -20°C lagern. Vor Licht schützen.
Lagerungspuffer:
BS mit 50% Glycerin, 0,05% Proclin300, 0,5% BSA, pH 7,3.
Aliquotieren ist nicht notwendig bei -20°C Lagerung

*** 20ul-Größen enthalten 0.1% BSA

For technical support and original validation data for this product please contact:
T: 1 (888) 4PTGLAB (1-888-478-4522) (toll free in USA), or 1(312) 455-8498 (outside USA)
E: proteintech@ptglab.com
W: ptglab.com

This product is exclusively available under Proteintech Group brand and is not available to purchase from any other manufacturer.

Ausgewählte Validierungsdaten



Immunofluorescent analysis of (-20°C Ethanol) fixed HepG2 cells using CoraLite® Plus 488 ORM2-Specific antibody (CL488-66217, Clone: 4E9H10) at dilution of 1:200.