

Nur für Forschungszwecke

# PD-1/CD279 Monoklonaler Antikörper

Katalog-Nr.:CL488-66220



## Allgemeine Informationen

<b>Katalog-Nr.:</b> CL488-66220	<b>GenBank-Zugangsnummer:</b> BC074740	<b>Reinigungsmethode:</b> Protein-A-Reinigung
<b>Größe:</b> 100ul , Konzentration: 2000 µg/ml von5133 Nanodrop;	<b>GeneID (NCBI):</b> programmed cell death 1	<b>CloneNo.:</b> 4H4D1
<b>Wirt:</b> Maus	<b>Vollständiger Name:</b> programmed cell death 1	<b>Empfohlene Verdünnungen:</b> IF 1:50-1:500
<b>Isotyp:</b> IgG2b	<b>Berechnete Masse:</b> 288 aa, 32 kDa	<b>Anregungs-/Emissionsmaxima-Wellenlängen:</b> 493 nm / 522 nm
<b>Immunogen Katalognummer:</b> AG12470		

## Anwendungen

<b>Geprüfte Anwendungen:</b> FC, IF	<b>Positivkontrollen:</b> IF : humanes Tonsillitisgewebe,
<b>Getestete Reaktivität:</b> Human, Maus, Ratte	

## Hintergrundinformationen

Programmed cell death 1 (PD-1, also known as CD279) is an immunoinhibitory receptor that belongs to the CD28/CTLA-4 subfamily of the Ig superfamily. It is a 288 amino acid (aa) type I transmembrane protein composed of one Ig superfamily domain, a stalk, a transmembrane domain, and an intracellular domain containing an immunoreceptor tyrosine-based inhibitory motif (ITIM) as well as an immunoreceptor tyrosine-based switch motif (ITSM) (PMID: 18173375). PD-1 is expressed during thymic development and is induced in a variety of hematopoietic cells in the periphery by antigen receptor signaling and cytokines (PMID: 20636820). Engagement of PD-1 by its ligands PD-L1 or PD-L2 transduces a signal that inhibits T-cell proliferation, cytokine production, and cytolytic function (PMID: 19426218). It is critical for the regulation of T cell function during immunity and tolerance. Blockade of PD-1 can overcome immune resistance and also has been shown to have antitumor activity (PMID: 22658127; 23169436). The calculated molecular weight of PD-1 is 32 kDa. It has been reported that PD-1 is heavily glycosylated and migrates with an apparent molecular mass of 47-55 kDa on SDS-PAGE (PMID: 8671665; 17640856; 17003438). This antibody is CL488(Ex/Em 488 nm/515 nm) conjugated.

## Lagerung

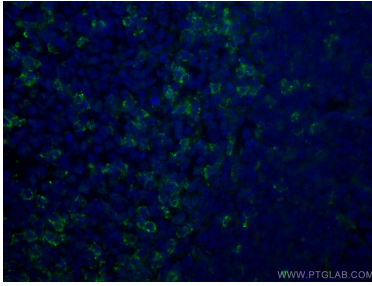
**Lagerungsbedingungen:**  
Bei -20°C lagern. Vor Licht schützen. Nach dem Versand ein Jahr stabil.  
**Lagerungspuffer:**  
BS mit 50% Glycerin, 0,05% Proclin300, 0,5% BSA, pH 7,3.  
**Aliquotieren ist nicht notwendig bei -20°C Lagerung**

**\*\*\* 20ul-Größen enthalten 0.1% BSA**

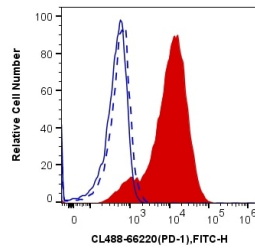
For technical support and original validation data for this product please contact:  
T: 1 (888) 4PTGLAB (1-888-478-4522) (toll free in USA), or 1(312) 455-8498 (outside USA)  
E: proteintech@ptglab.com  
W: ptglab.com

This product is exclusively available under Proteintech Group brand and is not available to purchase from any other manufacturer.

## Ausgewählte Validierungsdaten



Immunofluorescent analysis of (4% PFA) fixed human tonsillitis tissue using the CoraLite® Plus 488-conjugated version of this antibody, CL488-66220 (PD-1/CD279 antibody), at dilution of 1:150.



$1 \times 10^6$  Jurkat cells untreated (blue, dashed line) or treated with CD3 antibody (OKT3, 2  $\mu\text{g}/\text{ml}$ ) were surface stained with 0.4  $\mu\text{g}$  CoraLite® Plus 488 Anti-Human PD-1/CD279 (CL488-66220, Clone: 4H4D1) (red), or 0.4  $\mu\text{g}$  Mouse IgG2b Isotype Control (CL488-66360-3, Clone: K11B8C4B5) (blue, solid line). Cells were not fixed.