

Nur für Forschungszwecke

# S100A10 Monoklonaler Antikörper

Katalog-Nr.:CL488-66227



## Allgemeine Informationen

<b>Katalog-Nr.:</b> CL488-66227	<b>GenBank-Zugangsnummer:</b> BC015973	<b>Reinigungsmethode:</b> Protein-G-Reinigung
<b>Größe:</b> 100ul , Konzentration: 1000 µg/ml von6281	<b>GeneID (NCBI):</b> von6281	<b>CloneNo.:</b> 1B3F9
<b>Nanodrop;</b>	<b>Vollständiger Name:</b> S100 calcium binding protein A10	<b>Empfohlene Verdünnungen:</b> IF 1:50-1:500
<b>Wirt:</b> Maus	<b>Berechnete Masse:</b> 11 kDa	<b>Anregungs-/Emissionsmaxima-Wellenlängen:</b> 493 nm / 522 nm
<b>Isotyp:</b> IgG1	<b>Immunogen Katalognummer:</b> AG23596	

## Anwendungen

<b>Geprüfte Anwendungen:</b> IF	<b>Positivkontrollen:</b> IF : A431-Zellen,
<b>Getestete Reaktivität:</b> Human	

## Hintergrundinformationen

S100A10, also known as p11, is a member of the S100 family of small, EF hand containing dimeric proteins. S100 proteins are localized in the cytoplasm and/or nucleus of a wide range of cells, and involved in the regulation of a number of cellular processes such as cell cycle progression and differentiation. S100A10 is present on the surface of endothelial and other cells in a heterotetrameric complex with another Ca(2+)-binding protein, annexin II. S100A10 may function in exocytosis and endocytosis.

## Lagerung

**Lagerungsbedingungen:**  
Bei -20°C lagern. Vor Licht schützen.  
**Lagerungspuffer:**  
BS mit 50% Glycerin, 0,05% Proclin300, 0,5% BSA, pH 7,3.  
Aliquotieren ist nicht notwendig bei -20°C Lagerung

\*\*\* 20ul-Größen enthalten 0.1% BSA

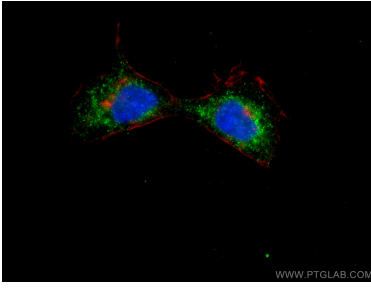
For technical support and original validation data for this product please contact:

T: 1 (888) 4PTGLAB (1-888-478-4522) (toll free in USA), or 1(312) 455-8498 (outside USA)

E: [proteintech@ptglab.com](mailto:proteintech@ptglab.com)  
W: [ptglab.com](http://ptglab.com)

This product is exclusively available under Proteintech Group brand and is not available to purchase from any other manufacturer.

## Ausgewählte Validierungsdaten



Immunofluorescent analysis of (4% PFA) fixed A431 cells using CoraLite®488 S100A10 antibody (CL488-66227, Clone: 1B3F9) at dilution of 1:200, CL594-Phalloidin (red).