

Nur für Forschungszwecke

UCHL1/PGP9.5 Monoklonaler Antikörper

Katalog-Nr.:CL488-66230



Allgemeine Informationen

Katalog-Nr.: CL488-66230	GenBank-Zugangsnummer: BC000332	Reinigungsmethode: Protein-G-Reinigung
Größe: 100ul , Konzentration: 2000 µg/ml durch die Bradford-Methode mit BSA als Standard;	GeneID (NCBI): 7345	CloneNo.: 1C9E11
Wirt: Maus	Vollständiger Name: ubiquitin carboxyl-terminal esterase L1 (ubiquitin thiolesterase)	Empfohlene Verdünnungen: IF 1:50-1:500
Isotyp: IgG1	Berechnete Masse: 25 kDa	Anregungs-/Emissionsmaxima-Wellenlängen: 493 nm / 522 nm
Immunogen Katalognummer: AG6547	Beobachtete Masse: 27 kDa	

Anwendungen

Geprüfte Anwendungen: FC (Intra), IF	Positivkontrollen: IF : SH-SY5Y-Zellen,
Getestete Reaktivität: Hausschwein, Human, Maus, Ratte	

Hintergrundinformationen

UCHL1(Ubiquitin carboxyl-terminal hydrolase isozyme L1) is a member of a gene family whose products hydrolyze small C-terminal adducts of ubiquitin to generate the ubiquitin monomer. Expression of UCHL1 is highly specific to neurons and to cells of the diffuse neuroendocrine system and their tumors. It is present in all neurons(PMID: 6343558). This protein is present in brain at concentrations at least 50 times greater than in other organs and is a major protein component of neuronal cytoplasm (PMID:7217993). And UCHL1 is a Parkinson's disease susceptibility gene (PMID:15048890).

Lagerung

Lagerungsbedingungen:
Bei -20°C lagern. Vor Licht schützen. Nach dem Versand ein Jahr stabil.
Lagerungspuffer:
BS mit 50% Glycerin, 0,05% Proclin300, 0,5% BSA, pH 7,3.
Aliquotieren ist nicht notwendig bei -20°C Lagerung

***** 20ul-Größen enthalten 0.1% BSA**

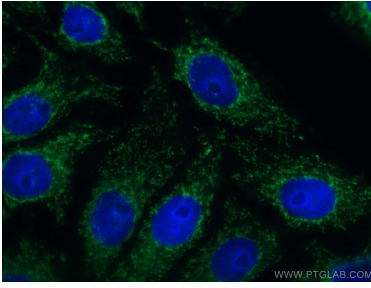
For technical support and original validation data for this product please contact:

T: 1 (888) 4PTGLAB (1-888-478-4522) (toll free in USA), or 1(312) 455-8498 (outside USA)

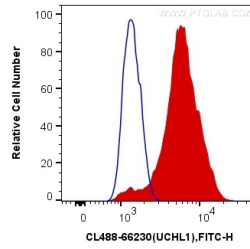
E: proteintech@ptglab.com
W: ptglab.com

This product is exclusively available under Proteintech Group brand and is not available to purchase from any other manufacturer.

Ausgewählte Validierungsdaten



Immunofluorescent analysis of (-20°C Ethanol) fixed SH-SY5Y cells using CL488-66230 (UCHL1 antibody) at dilution of 1:50.



1X10⁶ Y79 cells were intracellularly stained with 0.4 ug CoraLite® Plus 488 Anti-Human UCHL1/PGP9.5 (CL488-66230, Clone:1C9E11) (red), or 0.4 ug Mouse IgG1 Isotype Control (CL488-66360, Clone: T1F8D3F10) (blue). Cells were fixed with 4% PFA and permeabilized with Flow Cytometry Perm Buffer (PF00011-C).