

Nur für Forschungszwecke

Beta Tubulin Monoklonaler Antikörper



Katalog-Nr.: CL488-66240

8 Publikationen

Allgemeine Informationen

| | | |
|--|---|---|
| Katalog-Nr.: CL488-66240 | GenBank-Zugangsnummer: BC000748 | Reinigungsmethode: Protein-A-Reinigung |
| Größe: 100ul, Konzentration: 1000 µg/ml von10381 | GeneID (NCBI): 10381 | CloneNo.: 1D4A4 |
| Nanodrop; | Vollständiger Name: tubulin, beta 3 | Empfohlene Verdünnungen: WB 1:2000-1:10000 IF 1:50-1:500 |
| Wirt: Maus | Berechnete Masse: 450 aa, 50 kDa | Anregungs-/Emissionsmaxima-Wellenlängen: 493 nm / 522 nm |
| Isotyp: IgG2a | Immunogen Katalognummer: AG0117 | |

Anwendungen

| | |
|--|---|
| Geprüfte Anwendungen: FC (Intra), IF, WB | Positivkontrollen: WB : HeLa-Zellen, HEK-293-Zellen, NIH/3T3-Zellen IF : HepG2-Zellen, |
| In Publikationen genannte Anwendungen: IF, WB | |
| Getestete Reaktivität: Hausschwein, Human, Maus, Nematode, Ratte, Zebrafisch | |
| Zitierte Arten: Human, Maus, Ratte | |

Hintergrundinformationen

There are five tubulins in human cells: alpha, beta, gamma, delta, and epsilon. Tubulins are conserved across species. They form heterodimers, which multimerize to form a microtubule filament. An alpha and beta tubulin heterodimer is the basic structural unit of microtubules. The heterodimer does not come apart, once formed. The alpha and beta tubulins, which are each about 55 kDa MW, are homologous but not identical. Alpha and beta tubulins have been widely used as loading controls. Tubulin expression may vary according to resistance to antimicrobial and antimetabolic drugs.

Bemerkenswerte Veröffentlichungen

| Verfasser | Pubmed ID | Journal | Anwendung |
|---------------|-----------|------------------------|-----------|
| Maria Czarnek | 34703654 | Mol Ther Nucleic Acids | IF |
| Xiaomin Tang | 34869338 | Front Cell Dev Biol | IF |
| Gaojian Zhang | 35372814 | iScience | WB |

Lagerung

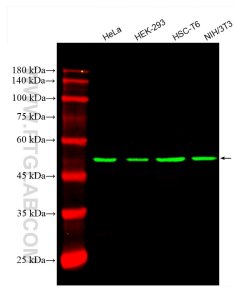
Lagerungsbedingungen:
Bei -20°C lagern. Vor Licht schützen. Nach dem Versand ein Jahr stabil.
Lagerungspuffer:
BS mit 50% Glycerin, 0,05% Proclin300, 0,5% BSA, pH 7,3.
Aliquotieren ist nicht notwendig bei -20°C Lagerung

*** 20ul-Größen enthalten 0.1% BSA

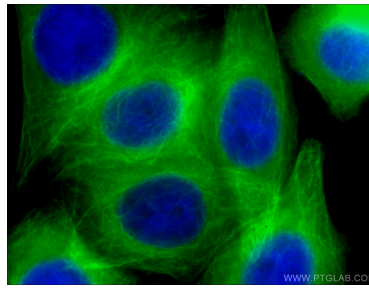
For technical support and original validation data for this product please contact:
T: 1 (888) 4PTGLAB (1-888-478-4522) (toll free in USA), or 1(312) 455-8498 (outside USA)
E: proteintech@ptglab.com
W: ptglab.com

This product is exclusively available under Proteintech Group brand and is not available to purchase from any other manufacturer.

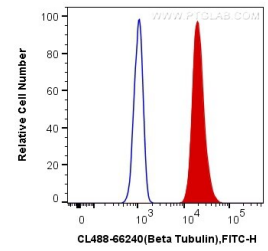
Ausgewählte Validierungsdaten



Various lysates were subjected to SDS PAGE followed by western blot with CL488-66240 (Beta Tubulin antibody) at dilution of 1:5000 incubated at room temperature for 1.5 hours.



Immunofluorescent analysis of (4% PFA) fixed HepG2 cells using CL488-66240 (beta Tubulin antibody) at dilution of 1:100.



1X10⁶ HeLa cells were intracellularly stained with 0.4 ug CoraLite® Plus 488 Anti-Human Beta Tubulin (CL488-66240, Clone:1D4A4) (red), or 0.4 ug Mouse IgG2a Isotype Control (CL488-66360-2, Clone: K11A1B2A2) (blue). Cells were fixed with 4% PFA and permeabilized with Flow Cytometry Perm Buffer (PF00011-C).