

Nur für Forschungszwecke

# SFRP2 Monoklonaler Antikörper

Katalog-Nr.:CL488-66328



## Allgemeine Informationen

|                                                                         |                                                                   |                                                                         |
|-------------------------------------------------------------------------|-------------------------------------------------------------------|-------------------------------------------------------------------------|
| <b>Katalog-Nr.:</b><br>CL488-66328                                      | <b>GenBank-Zugangsnummer:</b><br>BC008666                         | <b>Reinigungsmethode:</b><br>Protein-G-Reinigung                        |
| <b>Größe:</b><br>100ul , Konzentration: 1000 µg/ml von6423<br>Nanodrop; | <b>GeneID (NCBI):</b><br>von6423                                  | <b>CloneNo.:</b><br>1F3A1                                               |
| <b>Wirt:</b><br>Maus                                                    | <b>Vollständiger Name:</b><br>secreted frizzled-related protein 2 | <b>Empfohlene Verdünnungen:</b><br>IF 1:50-1:500                        |
| <b>Isotyp:</b><br>IgG1                                                  | <b>Berechnete Masse:</b><br>295 aa, 34 kDa                        | <b>Anregungs-/Emissionsmaxima-<br/>Wellenlängen:</b><br>493 nm / 522 nm |
| <b>Immunogen Katalognummer:</b><br>AG18840                              | <b>Beobachtete Masse:</b><br>38 kDa                               |                                                                         |

## Anwendungen

|                                               |                                                   |
|-----------------------------------------------|---------------------------------------------------|
| <b>Geprüfte Anwendungen:</b><br>IF            | <b>Positivkontrollen:</b><br>IF : SH-SY5Y-Zellen, |
| <b>Getestete Reaktivität:</b><br>Human, Ratte |                                                   |

## Hintergrundinformationen

Secreted frizzled-related protein 2 (Sfrp2) is a secreted glycoprotein molecule containing an N terminal cysteine-rich domain, which is typically 30-50% identical to the putative Wnt-binding site of the frizzled receptor, and a C terminal heparin-binding domain with weak homology to netrins. It has been implicated in diverse cellular processes, including embryogenesis, regulation of cell apoptosis, and cell differentiation. Methylation of this gene is a potential marker for the presence of colorectal cancer.

## Lagerung

**Lagerungsbedingungen:**  
Bei -20°C lagern. Vor Licht schützen. Nach dem Versand ein Jahr stabil.  
**Lagerungspuffer:**  
BS mit 50% Glycerin, 0,05% Proclin300, 0,5% BSA, pH 7,3.  
Aliquotieren ist nicht notwendig bei -20°C Lagerung

**\*\*\* 20ul-Größen enthalten 0.1% BSA**

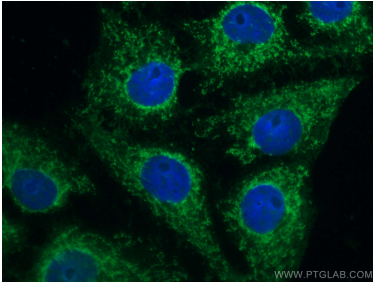
For technical support and original validation data for this product please contact:

T: 1 (888) 4PTGLAB (1-888-478-4522) (toll free  
in USA), or 1(312) 455-8498 (outside USA)

E: proteintech@ptglab.com  
W: ptglab.com

This product is exclusively available under Proteintech Group brand and is not available to purchase from any other manufacturer.

## Ausgewählte Validierungsdaten



Immunofluorescent analysis of (-20°C Ethanol) fixed SH-SY5Y cells using CL488-66328 (SFRP2 antibody) at dilution of 1:100.