

Nur für Forschungszwecke

IgG1 Isotype Control Monoklonaler Antikörper



Katalog-Nr.:CL488-66360-1

Allgemeine Informationen

Katalog-Nr.: CL488-66360-1	GenBank-Zugangsnummer: GeneID (NCBI):	Reinigungsmethode: Protein-G-Reinigung
Größe: 100ug , Konzentration: 200 µg/ml von Nanodrop;	Vollständiger Name:	CloneNo.: 1F8D3
Wirt: Maus		Anregungs-/Emissionsmaxima-Wellenlängen: 493 nm / 522 nm
Isotyp: IgG1		

Anwendungen

Geprüfte Anwendungen:
FC

Getestete Reaktivität:
Megathura Crenulata

Hintergrundinformationen

This antibody is used as the isotype control of mouse IgG1 (Kappa). It can be used as the isotype control in Flow Cytometry, Immuno-Precipitation and other experiments. The immunogen of this antibody is Keyhole Limpet Hemocyanin (KLH).

Lagerung

Lagerungsbedingungen:
Store at 2-8°C. Avoid exposure to light. Stable for one year after shipment.

Lagerungspuffer:
PBS with 0.09% sodium azide and 0.5% BSA.

***** 20ul-Größen enthalten 0.1% BSA**

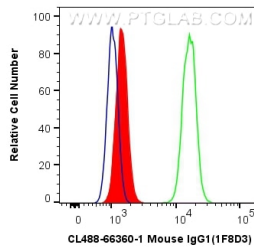
For technical support and original validation data for this product please contact:

T: 1 (888) 4PTGLAB (1-888-478-4522) (toll free in USA), or 1(312) 455-8498 (outside USA)

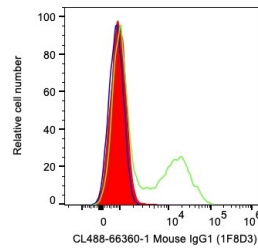
E: proteintech@ptglab.com
W: ptglab.com

This product is exclusively available under Proteintech Group brand and is not available to purchase from any other manufacturer.

Ausgewählte Validierungsdaten



1×10^6 A431 cells were intracellularly stained with 0.4 μ g CoraLite® Plus 488 Anti-Mouse IgG1 isotype control (CL488-66360-1, Clone: 1F8D3) (red), or 0.4 μ g CoraLite® Plus 488 Anti-Human FKBP8 (CL488-66690, Clone: 1C1G12) (green), or unstained (blue). Cells were fixed with 4% PFA and permeabilized with Flow Cytometry Perm Buffer (PF00011-C).



1×10^6 human PBMCs were surface stained with 0.2 μ g CoraLite® Plus 488 Anti-IgG1 Isotype Control (CL488-66360-1, Clone: 1F8D3) (red), CL488 Anti-Human CD35 (green), or unstained (blue). Cells were not fixed. Lymphocytes were gated.