

Nur für Forschungszwecke

# Cardiac Troponin I Monoklonaler Antikörper



Katalog-Nr.:CL488-66376

## Allgemeine Informationen

<b>Katalog-Nr.:</b> CL488-66376	<b>GenBank-Zugangsnummer:</b> BC096165	<b>Reinigungsmethode:</b> Protein-G-Reinigung
<b>Größe:</b> 100ul , Konzentration: 1000 µg/ml von7137 Nanodrop;	<b>GeneID (NCBI):</b> troponin I type 3 (cardiac)	<b>CloneNo.:</b> 1D5D6
<b>Wirt:</b> Maus	<b>Vollständiger Name:</b> troponin I type 3 (cardiac)	<b>Empfohlene Verdünnungen:</b> IF 1:50-1:500
<b>Isotyp:</b> IgG1	<b>Berechnete Masse:</b> 210 aa, 24 kDa	<b>Anregungs-/Emissionsmaxima-Wellenlängen:</b> 493 nm / 522 nm
<b>Immunogen Katalognummer:</b> AG16758	<b>Beobachtete Masse:</b> 26-28 kDa	

## Anwendungen

**Geprüfte Anwendungen:**  
IF  
**Getestete Reaktivität:**  
Human, Maus, Ratte

**Positivkontrollen:**  
IF : Mausherzgewebe,

## Hintergrundinformationen

Troponin I (TnI) is the inhibitory subunit of troponin, the structural protein involved in the regulation of striated muscle contraction. Cardiac Troponin I (cTnI) is produced by cardiac muscle. Two other TnI isoforms (slow sTnI and fast sTnI) are produced by slow-twitch and fast-twitch skeletal muscles, respectively. cTnI has been considered as one of the most specific and sensitive markers of myocardial damage like acute myocardial infarction (AMI) for decades. Detection of cTnI in serum is widely accepted as a diagnostic tool in acute coronary syndromes. This antibody is specific to cTnI, but not cross-react with skeletal TnI.

## Lagerung

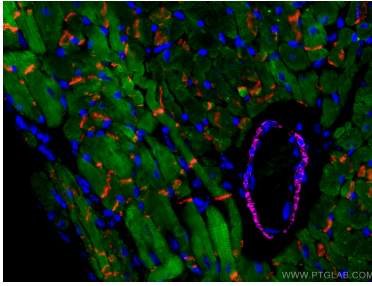
**Lagerungsbedingungen:**  
Bei -20°C lagern. Vor Licht schützen. Nach dem Versand ein Jahr stabil.  
**Lagerungspuffer:**  
BS mit 50% Glycerin, 0,05% Proclin300, 0,5% BSA, pH 7,3.  
**Aliquotieren ist nicht notwendig bei -20°C Lagerung**

**\*\*\* 20ul-Größen enthalten 0.1% BSA**

For technical support and original validation data for this product please contact:  
T: 1 (888) 4PTGLAB (1-888-478-4522) (toll free in USA), or 1(312) 455-8498 (outside USA)  
E: [proteintech@ptglab.com](mailto:proteintech@ptglab.com)  
W: [ptglab.com](http://ptglab.com)

**This product is exclusively available under Proteintech Group brand and is not available to purchase from any other manufacturer.**

## Ausgewählte Validierungsdaten



Immunofluorescent analysis of (4% PFA) fixed mouse heart tissue using CoraLite® Plus 488 Cardiac Troponin I antibody (CL488-66376, Clone: 1D5D6 ) at dilution of 1:200, CoraLite® Plus 647 smooth muscle actin specific antibody (CL647-67735, Clone: 1E9A11, magenta), CoraLite®594 N-cadherin antibody (CL594-22018, red). DAPI (blue).