

Beta Catenin Monoklonaler Antikörper

Katalog-Nr.:CL488-66379

Allgemeine Informationen

Katalog-Nr.: CL488-66379	GenBank-Zugangsnummer: NM_001904	Reinigungsmethode: Protein-G-Reinigung
Größe: 100ul , Konzentration: 1000 µg/ml von1499 Nanodrop;	GeneID (NCBI): 1188A1	CloneNo.: 1B8A1
Wirt: Maus	Vollständiger Name: catenin (cadherin-associated protein), IF 1:50-1:500	Empfohlene Verdünnungen: 1B8A1
Isotyp: IgG1	Berechnete Masse: 781 aa, 86 kDa	Anregungs-/Emissionsmaxima-Wellenlängen: 493 nm / 522 nm

Anwendungen

Geprüfte Anwendungen: FC (Intra), IF	Positivkontrollen: IF : MCF-7-Zellen,
Getestete Reaktivität: Hausschwein, Human, Maus, Ratte	

Hintergrundinformationen

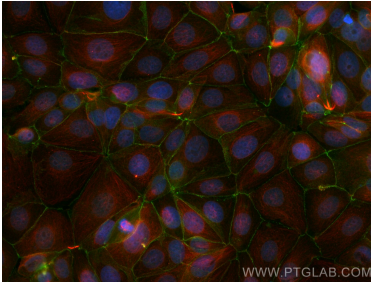
β-Catenin, also known as CTNNB1, is an evolutionarily conserved, multifunctional intracellular protein. β-Catenin was originally identified in cell adherens junctions (AJs) where it functions to bridge the cytoplasmic domain of cadherins to α-catenin and the actin cytoskeleton. Besides its essential role in the AJs, β-catenin is also a key downstream component of the canonical Wnt pathway that plays diverse and critical roles in embryonic development and adult tissue homeostasis. The Wnt/β-catenin pathway is also involved in the activation of other intracellular messengers such as calcium fluxes, JNK, and SRC kinases. Deregulation of β-catenin activity is associated with multiple diseases including cancers. (PMID: 22617422; 18334222) This antibody is conjugated with CL488(Ex/Em 488 nm/515 nm).

Lagerung

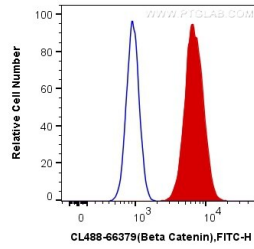
Lagerungsbedingungen:
Bei -20°C lagern. Vor Licht schützen. Nach dem Versand ein Jahr stabil.
Lagerungspuffer:
BS mit 50% Glycerin, 0,05% Proclin300, 0,5% BSA, pH 7,3.
Aliquotieren ist nicht notwendig bei -20°C Lagerung

*** 20ul-Größen enthalten 0.1% BSA

Ausgewählte Validierungsdaten



Immunofluorescent analysis of (4% PFA) fixed MCF-7 cells using CoraLite® Plus 488 Beta Catenin antibody (CL488-66379, Clone: 1B8A1) at dilution of 1:200, Alpha Tubulin antibody (11224-1-AP, red).



1X10⁶ MCF-7 cells were intracellularly stained with 0.4 ug CoraLite® Plus 488 Anti-Human Beta Catenin (CL488-66379, Clone:1B8A1) (red), or 0.4 ug Mouse IgG1 Isotype Control (CL488-66360, Clone: T1F8D3F10) (blue). Cells were fixed with 4% PFA and permeabilized with Flow Cytometry Perm Buffer (PF00011-C).