

Nur für Forschungszwecke

Plasminogen Monoklonaler Antikörper

Katalog-Nr.:CL488-66399



Allgemeine Informationen

Katalog-Nr.: CL488-66399	GenBank-Zugangsnummer: BC060513	Reinigungsmethode: Protein-G-Reinigung
Größe: 100ul , Konzentration: 1000 µg/ml von5340 Nanodrop;	GeneID (NCBI): 5340	CloneNo.: 1F6A11
Wirt: Maus	Vollständiger Name: plasminogen	Empfohlene Verdünnungen: IF 1:50-1:500
Isotyp: IgG1	Berechnete Masse: 810 aa, 91 kDa	Anregungs-/Emissionsmaxima-Wellenlängen: 493 nm / 522 nm
Immunogen Katalognummer: AG9938	Beobachtete Masse: 105 kDa	

Anwendungen

Geprüfte Anwendungen: IF	Positivkontrollen: IF : humanes Leberkarzinomgewebe,
Getestete Reaktivität: Human	

Hintergrundinformationen

Plasminogen is a secreted blood zymogen that is activated by proteolysis and converted to plasmin and angiostatin. Plasminogen plays an important role in fibrinolysis as well as wound healing, cell migration, tissue modeling and angiogenesis. Plasminogen is synthesized in the liver, and it circulates in the blood, with a half-life of 2.2 days. Plasminogen is the precursor of plasmin, which lyses fibrin clots to fibrin degradation products (FDP) and D-dimer; the conversion to active protease is mediated by tissue-type (tPA) and urokinase-type (uPA) plasminogen activators. Defects in plasminogen are likely a cause of thrombophilia and ligneous conjunctivitis.

Lagerung

Lagerungsbedingungen:
Bei -20°C lagern. Vor Licht schützen.
Lagerungspuffer:
BS mit 50% Glycerin, 0,05% Proclin300, 0,5% BSA, pH 7,3.
Aliquotieren ist nicht notwendig bei -20°C Lagerung

***** 20ul-Größen enthalten 0.1% BSA**

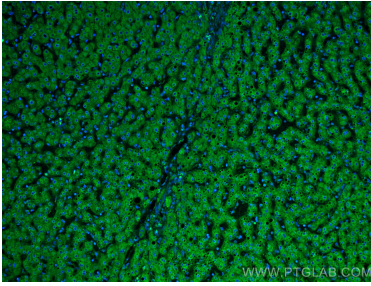
For technical support and original validation data for this product please contact:

T: 1 (888) 4PTGLAB (1-888-478-4522) (toll free in USA), or 1(312) 455-8498 (outside USA)

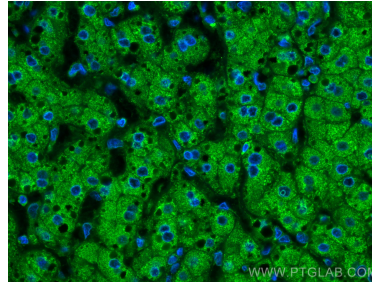
E: proteintech@ptglab.com
W: ptglab.com

This product is exclusively available under Proteintech Group brand and is not available to purchase from any other manufacturer.

Ausgewählte Validierungsdaten



Immunofluorescent analysis of (4% PFA) fixed human liver cancer tissue using CoraLite® Plus 488 Plasminogen antibody (CL488-66399, Clone: 1F6A11) at dilution of 1:200.



Immunofluorescent analysis of (4% PFA) fixed human liver cancer tissue using CoraLite® Plus 488 Plasminogen antibody (CL488-66399, Clone: 1F6A11) at dilution of 1:200.