

Nur für Forschungszwecke

# Calsequestrin 2 Monoklonaler Antikörper

Katalog-Nr.:CL488-66419



## Allgemeine Informationen

<b>Katalog-Nr.:</b> CL488-66419	<b>GenBank-Zugangsnummer:</b> BC022288	<b>Reinigungsmethode:</b> Protein-A-Reinigung
<b>Größe:</b> 100ul , Konzentration: 1000 µg/ml von845 Nanodrop;	<b>GeneID (NCBI):</b> calsequestrin 2 (cardiac muscle)	<b>CloneNo.:</b> 1C10A1
<b>Wirt:</b> Maus	<b>Vollständiger Name:</b> calsequestrin 2 (cardiac muscle)	<b>Empfohlene Verdünnungen:</b> IF 1:50-1:500
<b>Isotyp:</b> IgG2a	<b>Berechnete Masse:</b> 46 kDa	<b>Anregungs-/Emissionsmaxima- Wellenlängen:</b> 493 nm / 522 nm
<b>Immunogen Katalognummer:</b> AG13246	<b>Beobachtete Masse:</b> 50 kDa	

## Anwendungen

<b>Geprüfte Anwendungen:</b> IF	<b>Positivkontrollen:</b> IF : Mausherzgewebe,
<b>Getestete Reaktivität:</b> Hausschwein, Human, Maus, Ratte	

## Hintergrundinformationen

Calsequestrin (CASQ) is a Ca<sup>2+</sup>-binding protein present primarily in junctional sarcoplasmic reticulum of skeletal and cardiac muscle; the cardiac form (CASQ2) is encoded by a separate gene. The primary role of CASQ2 is buffering of the sarcoplasmic reticulum Ca<sup>2+</sup> ions, but another role for CASQ2 has emerged recently: CASQ2 regulates the open probability of ryanodine receptor 2 (RyR2). Mutations in CASQ2 cause stress-induced polymorphic ventricular tachycardia, also referred to as catecholaminergic polymorphic ventricular tachycardia 2 (CPVT2), a disease characterized by bidirectional ventricular tachycardia that may lead to cardiac arrest.

## Lagerung

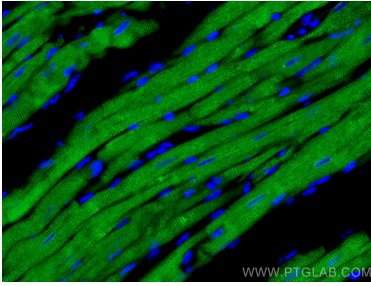
**Lagerungsbedingungen:**  
Bei -20°C lagern. Vor Licht schützen.  
**Lagerungspuffer:**  
BS mit 50% Glycerin, 0,05% Proclin300, 0,5% BSA, pH 7,3.  
**Aliquotieren ist nicht notwendig bei -20°C Lagerung**

**\*\*\* 20ul-Größen enthalten 0.1% BSA**

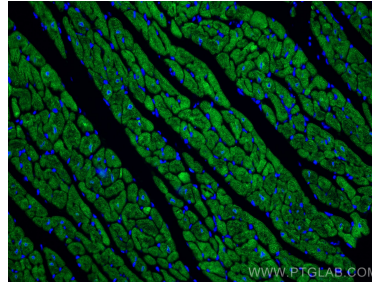
For technical support and original validation data for this product please contact:  
T: 1 (888) 4PTGLAB (1-888-478-4522) (toll free in USA), or 1(312) 455-8498 (outside USA)  
E: proteintech@ptglab.com  
W: ptglab.com

**This product is exclusively available under Proteintech Group brand and is not available to purchase from any other manufacturer.**

## Ausgewählte Validierungsdaten



Immunofluorescent analysis of (4% PFA) fixed mouse heart tissue using CoraLite® Plus 488 Calsequestrin 2 antibody (CL488-66419, Clone: 1C10A1 ) at dilution of 1:200.



Immunofluorescent analysis of (4% PFA) fixed mouse heart tissue using CoraLite® Plus 488 Calsequestrin 2 antibody (CL488-66419, Clone: 1C10A1 ) at dilution of 1:200.