

Nur für Forschungszwecke

PEBP1 Monoklonaler Antikörper

Katalog-Nr.:CL488-66438



Allgemeine Informationen

Katalog-Nr.: CL488-66438	GenBank-Zugangsnummer: BC008714	Reinigungsmethode: Protein-G-Reinigung
Größe: 100ul , Konzentration: 1000 µg/ml von5037 Nanodrop;	GeneID (NCBI): 5037	CloneNo.: 2D4D11
Wirt: Maus	Vollständiger Name: phosphatidylethanolamine binding protein 1	Empfohlene Verdünnungen: IF 1:50-1:500
Isotyp: IgG1	Berechnete Masse: 21 kDa	Anregungs-/Emissionsmaxima- Wellenlängen: 493 nm / 522 nm
Immunogen Katalognummer: AG0864	Beobachtete Masse: 23-27 kDa	

Anwendungen

Geprüfte Anwendungen: FC (Intra), IF	Positivkontrollen: IF : A549-Zellen,
Getestete Reaktivität: Human, Maus, Ratte	

Hintergrundinformationen

Raf kinase inhibitor protein (RKIP), also termed phosphatidylethanolamine binding protein PEBP1, was initially identified as a potent inhibitor of Raf-1/MEK/ERK, NF-κB, and G-protein-coupled receptor signaling pathways. Later RKIP has been further identified as a metastasis suppressor and its loss of expression has been reported in various cancers. Its expression has been proposed as a prognostic marker for patients diagnosed with the above cancers.

Lagerung

Lagerungsbedingungen:
Bei -20°C lagern. Vor Licht schützen. Nach dem Versand ein Jahr stabil.
Lagerungspuffer:
BS mit 50% Glycerin, 0,05% Proclin300, 0,5% BSA, pH 7,3.
Aliquotieren ist nicht notwendig bei -20°C Lagerung

***** 20ul-Größen enthalten 0.1% BSA**

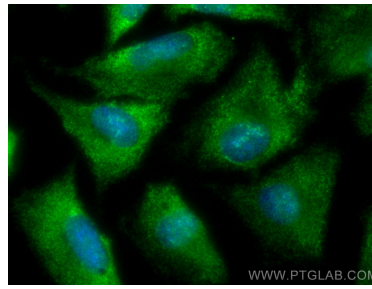
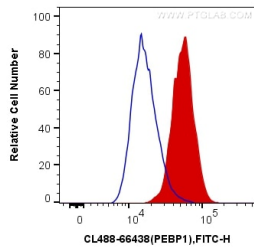
For technical support and original validation data for this product please contact:

T: 1 (888) 4PTGLAB (1-888-478-4522) (toll free
in USA), or 1(312) 455-8498 (outside USA)

E: proteintech@ptglab.com
W: ptglab.com

This product is exclusively available under Proteintech Group brand and is not available to purchase from any other manufacturer.

Ausgewählte Validierungsdaten



1×10^6 PC-12 cells were intracellularly stained with 0.4 μ g CoraLite® Plus 488 Anti-Human PEBP1 (CL488-66438, Clone:2D4D11) (red), or 0.4 μ g Mouse IgG1 Isotype Control (CL488-66360, Clone: T1F8D3F10) (blue). Cells were fixed with 4% PFA and permeabilized with Flow Cytometry Perm Buffer (PF00011-C).

Immunofluorescent analysis of (-20°C Ethanol) fixed A549 cells using CoraLite® Plus 488 PEBP1 antibody (CL488-66438, Clone: 2D4D11) at dilution of 1:200.