

Nur für Forschungszwecke

# CBX3 Monoklonaler Antikörper

Katalog-Nr.:CL488-66446



## Allgemeine Informationen

<b>Katalog-Nr.:</b> CL488-66446	<b>GenBank-Zugangsnummer:</b> BC000954	<b>Reinigungsmethode:</b> Protein-A-Reinigung
<b>Größe:</b> 100ul , Konzentration: 1000 µg/ml von11335 Nanodrop;	<b>GeneID (NCBI):</b> 11335	<b>CloneNo.:</b> 1A5A3
<b>Wirt:</b> Maus	<b>Vollständiger Name:</b> chromobox homolog 3 (HP1 gamma homolog, Drosophila)	<b>Empfohlene Verdünnungen:</b> IF 1:250-1:1000
<b>Isotyp:</b> IgG2a	<b>Berechnete Masse:</b> 21 kDa	<b>Anregungs-/Emissionsmaxima-Wellenlängen:</b> 493 nm / 522 nm
<b>Immunogen Katalognummer:</b> AG19112	<b>Beobachtete Masse:</b> 22 kDa	

## Anwendungen

<b>Geprüfte Anwendungen:</b> FC (Intra), IF	<b>Positivkontrollen:</b> IF : HepG2-Zellen,
<b>Getestete Reaktivität:</b> Human, Maus	

## Hintergrundinformationen

The family of Heterochromatin protein 1 (HP1) proteins is a family of highly conserved heterochromatin-associated non-histone chromosomal proteins, which has important functions in nucleus. These functions include gene activation or repression, regulation of binding of cohesion complexes to centromere, sequestration of genes to nuclear periphery, and heterochromatin formation and propagation. Much evidence shows that HP1 proteins interact with numerous proteins including methylated histones, histone methyltransferases and so on. CBX3 is one of the paralogues of HP1 proteins

## Lagerung

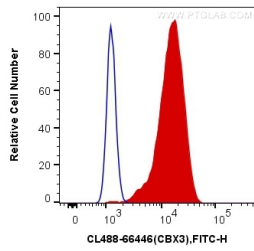
**Lagerungsbedingungen:**  
Bei -20°C lagern. Vor Licht schützen. Nach dem Versand ein Jahr stabil.  
**Lagerungspuffer:**  
BS mit 50% Glycerin, 0,05% Proclin300, 0,5% BSA, pH 7,3.  
**Aliquotieren ist nicht notwendig bei -20°C Lagerung**

**\*\*\* 20ul-Größen enthalten 0.1% BSA**

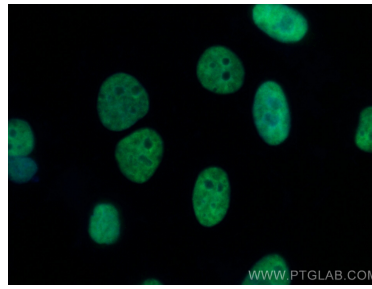
For technical support and original validation data for this product please contact:  
T: 1 (888) 4PTGLAB (1-888-478-4522) (toll free in USA), or 1(312) 455-8498 (outside USA)  
E: proteintech@ptglab.com  
W: ptglab.com

**This product is exclusively available under Proteintech Group brand and is not available to purchase from any other manufacturer.**

## Ausgewählte Validierungsdaten



$1 \times 10^6$  HeLa cells were stained with 0.2  $\mu$ g CoraLite® Plus 488 Anti-Human CBX3 (CL488-66446, Clone: 1A5A3) (red), or 0.2  $\mu$ g Mouse IgG2a Isotype Control (CL488-66360-2, Clone: K11A1B2A2) (blue). Cells were fixed and permeabilized with Transcription Factor Staining Buffer Kit (PF00011).



Immunofluorescent analysis of (4% PFA) fixed HepG2 cells using CoraLite® Plus 488 CBX3 antibody (CL488-66446, Clone: 1A5A3) at dilution of 1:500.