

Nur für Forschungszwecke

ZO-1 Monoklonaler Antikörper

Katalog-Nr.: CL488-66452

Vorgestelltes Produkt



Allgemeine Informationen

Katalog-Nr.: CL488-66452	GenBank-Zugangsnummer: BC111712	Reinigungsmethode: Protein-G-Reinigung
Größe: 100ul, Konzentration: 1000 µg/ml von7082 Nanodrop;	GeneID (NCBI): Vollständiger Name: tight junction protein 1 (zona occludens 1)	CloneNo.: 1G4A1
Wirt: Maus	Berechnete Masse: 1748 aa, 195 kDa	Empfohlene Verdünnungen: IF 1:50-1:500
Isotyp: IgG1	Beobachtete Masse: 230 kDa	Anregungs-/Emissionsmaxima- Wellenlängen: 493 nm / 522 nm
Immunogen Katalognummer: AG16454		

Anwendungen

Geprüfte Anwendungen: IF	Positivkontrollen: IF : MCF-7-Zellen,
Getestete Reaktivität: Human, Hund	

Hintergrundinformationen

Tight junction (or zonula occludens) form the continuous intercellular barrier between epithelial and endothelial cells, which is required to separate tissue spaces and regulate selective movement of solutes across the epithelium and endothelium (PMID: 20066090). ZO-1 (also known as TJP1) is a peripheral membrane phosphoprotein located on the cytoplasmic face and is expressed in tight junctions of both epithelial and endothelial cells (PMID: 3528172). It binds the transmembrane proteins occludin and the claudins linking them to cytoskeletal actin (PMID: 17418867). ZO-1 belongs to a family of multidomain proteins known as the membrane-associated guanylate kinase homologs (MAGUKs). It is a pivotal tight junction protein and may be involved in signalling mechanisms regulating cell proliferation and differentiation (PMID: 22782886).

Lagerung

Lagerungsbedingungen:
Bei -20°C lagern. Vor Licht schützen. Nach dem Versand ein Jahr stabil.
Lagerungspuffer:
BS mit 50% Glycerin, 0,05% Proclin300, 0,5% BSA, pH 7,3.
Aliquotieren ist nicht notwendig bei -20°C Lagerung

*** 20ul-Größen enthalten 0.1% BSA

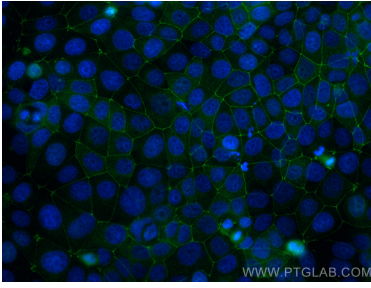
For technical support and original validation data for this product please contact:

T: 1 (888) 4PTGLAB (1-888-478-4522) (toll free
in USA), or 1(312) 455-8498 (outside USA)

E: proteintech@ptglab.com
W: ptglab.com

This product is exclusively available under Proteintech Group brand and is not available to purchase from any other manufacturer.

Ausgewählte Validierungsdaten



Immunofluorescent analysis of (4% PFA) fixed MCF-7 cells using Coralite® Plus 488 ZO-1 antibody (CL488-66452, Clone: 1G4A1) at dilution of 1:100.