

Nur für Forschungszwecke

TFF2 Monoklonaler Antikörper

Katalog-Nr.:CL488-66471



Allgemeine Informationen

Katalog-Nr.: CL488-66471	GenBank-Zugangsnummer: BC032820	Reinigungsmethode: Protein-A-Reinigung
Größe: 100ul , Konzentration: 1000 µg/ml von7032 Nanodrop;	GeneID (NCBI): trefoil factor 2	CloneNo.: 2D7B1
Wirt: Maus	Vollständiger Name: trefoil factor 2	Anregungs-/Emissionsmaxima-Wellenlängen: 493 nm / 522 nm
Isotyp: IgG2a	Berechnete Masse: 129 aa, 14 kDa	
Immunogen Katalognummer: AG18765	Beobachtete Masse: 16 kDa	

Anwendungen

Geprüfte Anwendungen:
FC (Intra)

Getestete Reaktivität:
Hausschwein, Human, Ratte

Hintergrundinformationen

The trefoil factor family (TFF), comprises of three polypeptides, TFF1, TFF2 and TFF3 (7-12 kDa), secreted to mucosal surfaces by mucus producing cells, prominently in the gastrointestinal tract. TFF2, also known as spasmolytic polypeptide, is a low-molecular weight protein, expressed in mucous neck cells of the fundus and glands at the base of the antrum in normal human stomach. TFF2 could Inhibit gastrointestinal motility and gastric acid secretion. However, recent studies suggest that TFF2 could also play an important role in the immune system.

Lagerung

Lagerungsbedingungen:
Bei -20°C lagern. Vor Licht schützen. Nach dem Versand ein Jahr stabil.

Lagerungspuffer:
BS mit 50% Glycerin, 0,05% Proclin300, 0,5% BSA, pH 7,3.

Aliquotieren ist nicht notwendig bei -20°C Lagerung

***** 20ul-Größen enthalten 0.1% BSA**

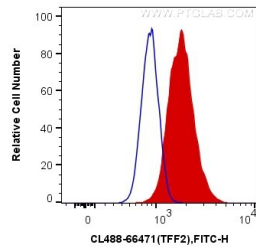
For technical support and original validation data for this product please contact:

T: 1 (888) 4PTGLAB (1-888-478-4522) (toll free in USA), or 1(312) 455-8498 (outside USA)

E: proteintech@ptglab.com
W: ptglab.com

This product is exclusively available under Proteintech Group brand and is not available to purchase from any other manufacturer.

Ausgewählte Validierungsdaten



1X10⁶ HeLa cells were intracellularly stained with 0.4 ug CoraLite® Plus 488 Anti-Human TFF2 (CL488-66471, Clone:2D7B1) (red), or 0.4 ug Mouse IgG2a Isotype Control (CL488-66360-2, Clone: K11A1B2A2) (blue). Cells were fixed with 4% PFA and permeabilized with Flow Cytometry Perm Buffer (PF00011-C).