

Nur für Forschungszwecke

SOD2 Monoklonaler Antikörper

Katalog-Nr.:CL488-66474



Allgemeine Informationen

Katalog-Nr.: CL488-66474	GenBank-Zugangsnummer: BC016934	Reinigungsmethode: Protein-A-Reinigung
Größe: 100ul , Konzentration: 1000 µg/ml von6648 Nanodrop;	GeneID (NCBI): superoxide dismutase 2, mitochondrial	CloneNo.: 3A6C2
Wirt: Maus	Vollständiger Name: superoxide dismutase 2, mitochondrial	Empfohlene Verdünnungen: IF 1:50-1:500
Isotyp: IgG2a	Berechnete Masse: 25 kDa	Anregungs-/Emissionsmaxima- Wellenlängen: 493 nm / 522 nm
Immunogen Katalognummer: AG21388	Beobachtete Masse: 25 kDa	

Anwendungen

Geprüfte Anwendungen: FC (Intra), IF	Positivkontrollen: IF : HUVEC-Zellen,
Getestete Reaktivität: Hausschwein, Human, Maus, Ratte	

Hintergrundinformationen

SOD2(superoxide dismutase 2, mitochondrial) is also named as IPOB, MNSOD, SODM, Mn-SOD and belongs to the iron/manganese superoxide dismutase family. It is a marker of mitochondria, which is restricted to the perinuclear area in a cell with aggregate formation of mutant SOD1(PMID:12659845). It functions as the first line of antioxidant defense against highly reactive superoxide radicals and it appears to be early predictors for survival in septic patients with with MIF(PMID:20863520). It has 2 isoforms with the molecular weight of 25 kDa and 21 kDa.

Lagerung

Lagerungsbedingungen:
Bei -20°C lagern. Vor Licht schützen. Nach dem Versand ein Jahr stabil.
Lagerungspuffer:
BS mit 50% Glycerin, 0,05% Proclin300, 0,5% BSA, pH 7,3.
Aliquotieren ist nicht notwendig bei -20°C Lagerung

*** 20ul-Größen enthalten 0.1% BSA

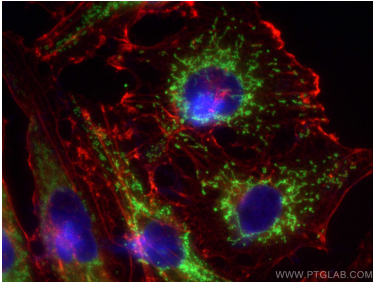
For technical support and original validation data for this product please contact:

T: 1 (888) 4PTGLAB (1-888-478-4522) (toll free
in USA), or 1(312) 455-8498 (outside USA)

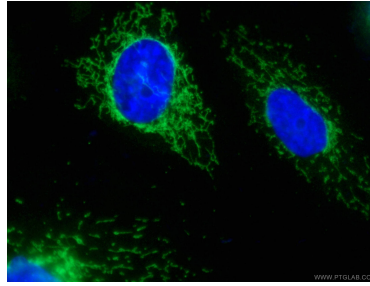
E: proteintech@ptglab.com
W: ptglab.com

This product is exclusively available under Proteintech Group brand and is not available to purchase from any other manufacturer.

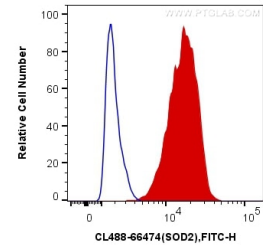
Ausgewählte Validierungsdaten



Immunofluorescent analysis of (-20°C Methanol) fixed HUVEC cells using CoralLite® Plus 488 SOD2 antibody (CL488-66474, Clone: 3A6C2) at dilution of 1:200, CoralLite®594 Beta Actin antibody (CL594-66009, Clone: 2D4H5, red).



Immunofluorescent analysis of (-20°C Ethanol) fixed HUVEC cells using CL488-66474 (SOD2) antibody at dilution of 1:100.



1X10⁶ HeLa cells were intracellularly stained with 0.4 ug CoralLite® Plus 488 Anti-Human SOD2 (CL488-66474, Clone:3A6C2) (red), or 0.4 ug Mouse IgG2a Isotype Control (CL488-66360-2, Clone: K11A1B2A2) (blue). Cells were fixed with 4% PFA and permeabilized with Flow Cytometry Perm Buffer (PF00011-C).