

Nur für Forschungszwecke

SDHA Monoklonaler Antikörper

Katalog-Nr.:CL488-66588



Allgemeine Informationen

Katalog-Nr.: CL488-66588	GenBank-Zugangsnummer: BC001380	Reinigungsmethode: Protein-G-Reinigung
Größe: 100ul , Konzentration: 810 µg/ml von Nanodrop;	GeneID (NCBI): 6389	CloneNo.: 5E10G12
Wirt: Maus	Vollständiger Name: succinate dehydrogenase complex, subunit A, flavoprotein (Fp)	Empfohlene Verdünnungen: IF 1:50-1:500
Isotyp: IgG1	Berechnete Masse: 73 kDa	Anregungs-/Emissionsmaxima- Wellenlängen: 493 nm / 522 nm
Immunogen Katalognummer: AG7023	Beobachtete Masse: 62-73 kDa	

Anwendungen

Geprüfte Anwendungen: FC (Intra), IF	Positivkontrollen: IF : HepG2-Zellen,
Getestete Reaktivität: Human, Maus, Ratte	

Hintergrundinformationen

SDHA, also named as SDH2, SDHF and Fp, belongs to the FAD-dependent oxidoreductase 2 family and FRD/SDH subfamily. SDHA is the flavoprotein subunit of succinate dehydrogenase (SDH) that is involved in complex II of the mitochondrial electron transport chain and is responsible for transferring electrons from succinate to ubiquinone (coenzyme Q). SDHA has 3 isoforms with the molecular mass of 73, 67 and 57 kDa, and the N-terminal (~5 kDa) can be removed in mature form. It can be detected a band of 68 kDa in cutaneous melanoma(PMID:21698147). SDHA may act as a tumor suppressor.

Lagerung

Lagerungsbedingungen:
Bei -20°C lagern. Vor Licht schützen. Nach dem Versand ein Jahr stabil.
Lagerungspuffer:
BS mit 50% Glycerin, 0,05% Proclin300, 0,5% BSA, pH 7,3.
Aliquotieren ist nicht notwendig bei -20°C Lagerung

***** 20ul-Größen enthalten 0.1% BSA**

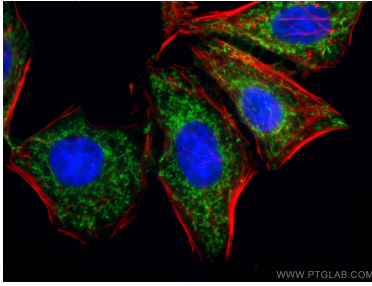
For technical support and original validation data for this product please contact:

T: 1 (888) 4PTGLAB (1-888-478-4522) (toll free
in USA), or 1(312) 455-8498 (outside USA)

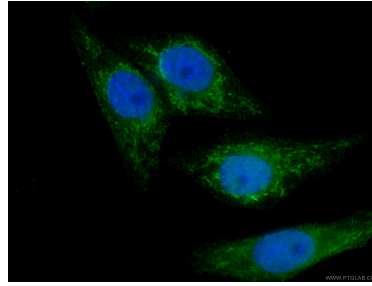
E: proteintech@ptglab.com
W: ptglab.com

This product is exclusively available under Proteintech Group brand and is not available to purchase from any other manufacturer.

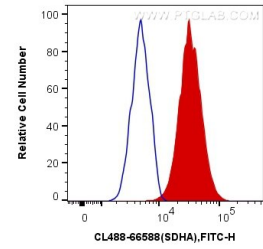
Ausgewählte Validierungsdaten



Immunofluorescent analysis of (4% PFA) fixed HepG2 cells using CoraLite® Plus 488-conjugated SDHA antibody (CL488-66588, Clone: 5E10G12) at dilution of 1:100. Red: CL594-Phalloidin stains F-Actin; Blue: DAPI.



Immunofluorescent analysis of (4% PFA) fixed HepG2 cells using CL488-66588 (SDHA antibody) at dilution of 1:100.



1X10⁶ HeLa cells were intracellularly stained with 0.4 ug CoraLite® Plus 488 Anti-Human SDHA (CL488-66588, Clone:5E10G12) (red), or 0.4 ug Control Antibody. Cells were fixed with 4% PFA and permeabilized with Flow Cytometry Perm Buffer (PF00011-C).