

Nur für Forschungszwecke

# RIC8A Monoklonaler Antikörper

Katalog-Nr.:CL488-66625



## Allgemeine Informationen

<b>Katalog-Nr.:</b> CL488-66625	<b>GenBank-Zugangsnummer:</b> BC011821	<b>Reinigungsmethode:</b> Protein-G-Reinigung
<b>Größe:</b> 100ul, Konzentration: 1000 µg/ml von60626 Nanodrop;	<b>GeneID (NCBI):</b> 1E3B11	<b>CloneNo.:</b> 1E3B11
<b>Wirt:</b> Maus	<b>Vollständiger Name:</b> resistance to inhibitors of cholinesterase 8 homolog A (C. elegans)	<b>Empfohlene Verdünnungen:</b> IF 1:50-1:500
<b>Isotyp:</b> IgG1	<b>Berechnete Masse:</b> 60 kDa	<b>Anregungs-/Emissionsmaxima- Wellenlängen:</b> 493 nm / 522 nm
<b>Immunogen Katalognummer:</b> AG1593	<b>Beobachtete Masse:</b> 65 kDa	

## Anwendungen

<b>Geprüfte Anwendungen:</b> IF	<b>Positivkontrollen:</b> IF : Maushirngewebe,
<b>Getestete Reaktivität:</b> Human, Maus, Ratte	

## Hintergrundinformationen

RIC8A, also named as synembryn-A, is a Guanine nucleotide exchange factor (GEF), which can activate some, but not all, G-alpha proteins by exchanging bound GDP for free GTP. It is involved in regulation of microtubule pulling forces during mitotic movement of chromosomes by stimulating G(i)-alpha protein, possibly leading to release G(i)-alpha-GTP and NuMA proteins from the NuMA-GPSM2-G(i)-alpha-GDP complex. RIC8A also acts as an activator for G(q)-alpha (GNAQ) protein by enhancing the G(q)-coupled receptor-mediated ERK activation.

## Lagerung

**Lagerungsbedingungen:**  
Bei -20°C lagern. Vor Licht schützen.  
**Lagerungspuffer:**  
BS mit 50% Glycerin, 0,05% Proclin300, 0,5% BSA, pH 7,3.  
Aliquotieren ist nicht notwendig bei -20°C Lagerung

**\*\*\* 20ul-Größen enthalten 0.1% BSA**

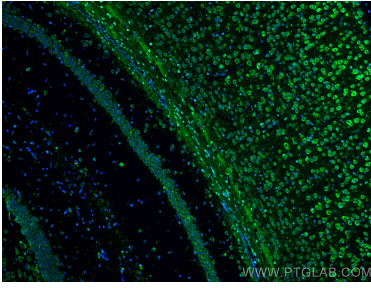
For technical support and original validation data for this product please contact:

T: 1 (888) 4PTGLAB (1-888-478-4522) (toll free  
in USA), or 1(312) 455-8498 (outside USA)

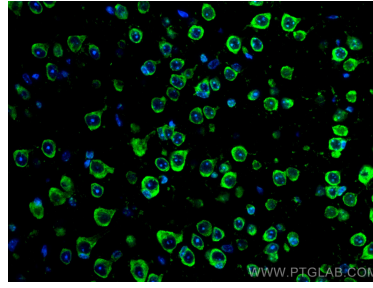
E: [proteintech@ptglab.com](mailto:proteintech@ptglab.com)  
W: [ptglab.com](http://ptglab.com)

**This product is exclusively available under Proteintech Group brand and is not available to purchase from any other manufacturer.**

## Ausgewählte Validierungsdaten



Immunofluorescent analysis of (4% PFA) fixed mouse brain tissue using CoraLite® Plus 488 RIC8A antibody (CL488-66625, Clone: 1E3B11) at dilution of 1:200.



Immunofluorescent analysis of (4% PFA) fixed mouse brain tissue using CoraLite® Plus 488 RIC8A antibody (CL488-66625, Clone: 1E3B11) at dilution of 1:200.