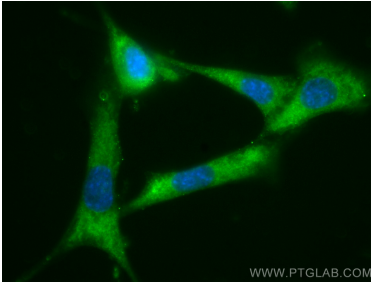
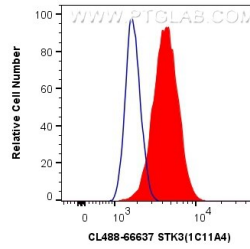




## Ausgewählte Validierungsdaten



Immunofluorescent analysis of (-20°C Methanol) fixed NIH/3T3 cells using CoraLite® Plus 488 STK3 antibody (CL488-66637, Clone: 1C11A4) at dilution of 1:200.



1X10<sup>6</sup> NIH/3T3 cells were intracellularly stained with 0.4 ug CoraLite® Plus 488 Anti-Human STK3 (CL488-66637, Clone:1C11A4) (red), or 0.4 ug Control Antibody. Cells were fixed with 4% PFA and permeabilized with Flow Cytometry Perm Buffer (PF00011-C).