

Nur für Forschungszwecke

# TLR2 Monoklonaler Antikörper

Katalog-Nr.:CL488-66645

Vorgestelltes Produkt



## Allgemeine Informationen

<b>Katalog-Nr.:</b> CL488-66645	<b>GenBank-Zugangsnummer:</b> BC033756	<b>Reinigungsmethode:</b> Protein-A-Reinigung
<b>Größe:</b> 100ul , Konzentration: 1000 µg/ml von7097	<b>GeneID (NCBI):</b> von7097	<b>CloneNo.:</b> 1C1D3
<b>Nanodrop;</b>	<b>Vollständiger Name:</b> toll-like receptor 2	<b>Anregungs-/Emissionsmaxima-Wellenlängen:</b> 493 nm / 522 nm
<b>Wirt:</b> Maus	<b>Berechnete Masse:</b> 784 aa, 90 kDa	
<b>Isotyp:</b> IgG2a	<b>Beobachtete Masse:</b> 90-100 kDa	
<b>Immunogen Katalognummer:</b> AG25626		

## Anwendungen

**Geprüfte Anwendungen:**  
FC (Intra)

**Getestete Reaktivität:**  
Human

## Hintergrundinformationen

TLR2, also known as CD282, is a member of the Toll-like receptor (TLR) family. TLR receptors are type I integral transmembrane glycoproteins which play a fundamental role in pathogen recognition and activation of innate immunity. TLR2 is expressed by immune cells including monocytes/macrophages, polymorphonuclear leukocytes (PMLs) and dendritic cells, and is also expressed by some non-immune cells including endothelial and epithelial cells (PMID: 21428911; 22566960). TLR2 forms heterodimers with TLR1 and TLR6, which is the initial step in a cascade of events leading to significant innate immune responses, development of adaptive immunity to pathogens and protection from immune sequelae related to infection with these pathogens (PMID: 22566960).

## Lagerung

**Lagerungsbedingungen:**  
Bei -20°C lagern. Vor Licht schützen. Nach dem Versand ein Jahr stabil.

**Lagerungspuffer:**  
BS mit 50% Glycerin, 0,05% Proclin300, 0,5% BSA, pH 7,3.

Aliquotieren ist nicht notwendig bei -20°C Lagerung

\*\*\* 20ul-Größen enthalten 0.1% BSA

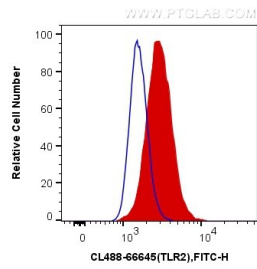
For technical support and original validation data for this product please contact:

T: 1 (888) 4PTGLAB (1-888-478-4522) (toll free in USA), or 1(312) 455-8498 (outside USA)

E: [proteintech@ptglab.com](mailto:proteintech@ptglab.com)  
W: [ptglab.com](http://ptglab.com)

This product is exclusively available under Proteintech Group brand and is not available to purchase from any other manufacturer.

## Ausgewählte Validierungsdaten



1X10<sup>6</sup> THP-1 cells were intracellularly stained with 0.4 ug CoraLite® Plus 488 Anti-Human TLR2 (CL488-66645, Clone:1C1D3) (red), or 0.4 ug Control Antibody. Cells were fixed with 4% PFA and permeabilized with Flow Cytometry Perm Buffer (PF00011-C).