

Allgemeine Informationen

Katalog-Nr.: CL488-66699	GenBank-Zugangsnummer: BC048094	Reinigungsmethode: Protein-G-Reinigung
Größe: 100ul , Konzentration: 1000 µg/ml von59272 Nanodrop;	GeneID (NCBI): 59272	CloneNo.: 2F12A4
Wirt: Maus	Vollständiger Name: angiotensin I converting enzyme (peptidyl-di-peptidase A) 2	Empfohlene Verdünnungen: IF 1:50-1:500
Isotyp: IgG1	Berechnete Masse: 805 aa, 92 kDa	Anregungs-/Emissionsmaxima- Wellenlängen: 493 nm / 522 nm
Immunogen Katalognummer: AG15554		

Anwendungen

Geprüfte Anwendungen: FC (Intra), IF	Positivkontrollen: IF : humanes Nierengewebe,
In Publikationen genannte Anwendungen: FC, IF	
Getestete Reaktivität: Human	
Zitierte Arten: Human	

Hintergrundinformationen

ACE2 (Angiotensin-converting enzyme 2), also named as ACEH, is a zinc metalloprotease of the ACE family and a critical regulator of the reninangiotensin system. ACE2 has a more restricted tissue distribution than ACE, being found predominantly in the heart, kidneys, and testes although low levels have been detected in a variety of tissues (PMID:15983030). ACE2 has been shown to be a functional receptor of the human coronaviruses SARS-CoV and SARS-CoV-2 (PMID: 32142651). The expression level and expression pattern of human ACE2 in different tissues might be critical for the susceptibility, symptoms, and outcome of 2019-nCoV/SARS-CoV-2 infection (PMID: 32133153). It can be used as a potential therapeutic target of SARS-CoV-2 (PMID: 32125455). The calculated molecular weight of ACE2 is 92kDa but it migrates to 120kDa due to N-glycosylation (PMID:16166094). Sometimes, several cleaved fragments can also be detected as 75kDa, 50 kDa or 37kDa (PMID: 29561187, 22009550, 30759273). It has 2 isoforms produced by alternative splicing. This antibody is specific to ACE2.

Bemerkenswerte Veröffentlichungen

Verfasser	Pubmed ID	Journal	Anwendung
Feng Xie	34665481	Adv Mater	FC
Shouwen Du	35045269	J Virol	IF

Lagerung

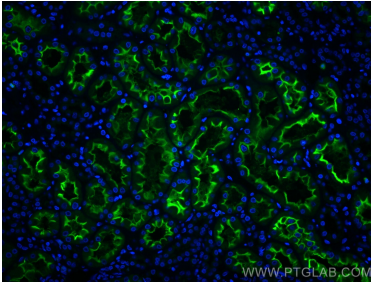
Lagerungsbedingungen:
Bei -20°C lagern. Vor Licht schützen. Nach dem Versand ein Jahr stabil.
Lagerungspuffer:
BS mit 50% Glycerin, 0,05% Proclin300, 0,5% BSA, pH 7,3.
Aliquotieren ist nicht notwendig bei -20°C Lagerung

***** 20ul-Größen enthalten 0.1% BSA**

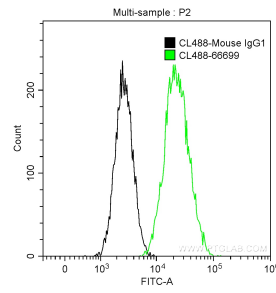
For technical support and original validation data for this product please contact:
 T: 1 (888) 4PTGLAB (1-888-478-4522) (toll free in USA), or 1(312) 455-8498 (outside USA)
 E: proteintech@ptglab.com
 W: ptglab.com

This product is exclusively available under Proteintech Group brand and is not available to purchase from any other manufacturer.

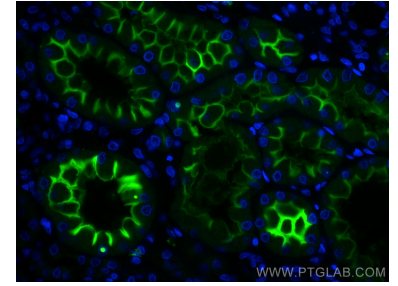
Ausgewählte Validierungsdaten



Immunofluorescent analysis of (4% PFA) fixed human kidney tissue using CoraLite® Plus 488 ACE2 antibody (CL488-66699, Clone: 2F12A4) at dilution of 1:200.



1×10^6 NIH/3T3 cells were stained with 1 μ g CoraLite® Plus 488-conjugated Anti-Human ACE2 (CL488-66699, Clone:2F12A4) (green), and 1 μ g Control Antibody. Cells were fixed with 90% MeOH.



Immunofluorescent analysis of (4% PFA) fixed human kidney tissue using CoraLite® Plus 488 ACE2 antibody (CL488-66699, Clone: 2F12A4) at dilution of 1:200.