

Nur für Forschungszwecke

IL-1 beta Monoklonaler Antikörper

Katalog-Nr.:CL488-66737



Allgemeine Informationen

Katalog-Nr.: CL488-66737	GenBank-Zugangsnummer: BC008678	Reinigungsmethode: Protein-G-Reinigung
Größe: 100ul , Konzentration: 1000 µg/ml von3553	GeneID (NCBI): 3553	CloneNo.: 2A1B4
Nanodrop;	Vollständiger Name: interleukin 1, beta	Anregungs-/Emissionsmaxima-Wellenlängen: 493 nm / 522 nm
Wirt: Maus	Berechnete Masse: 269 aa, 31 kDa	
Isotyp: IgG1	Beobachtete Masse: 35 kDa	
Immunogen Katalognummer: AG26030		

Anwendungen

Geprüfte Anwendungen:
FC (Intra)

Getestete Reaktivität:
Human

Hintergrundinformationen

Interleukin-1, produced mainly by blood monocytes, mediates the panoply of host reactions collectively known as acute phase response. It is identical to endogenous pyrogen. The multiple biologic activities that define IL1 are properties of a 15- to 18-kD protein that is derived from a 30- to 35-kD precursor. Interleukin 1 β (IL-1B) is a member of the interleukin 1 cytokine family. It is a pro-inflammatory cytokine against infection, playing an important role in the pathogenesis of cancers. It signals through various adaptor proteins and kinases that lead to activation of numerous downstream targets. The expression level of IL-1B is very low.

Lagerung

Lagerungsbedingungen:
Bei -20°C lagern. Vor Licht schützen. Nach dem Versand ein Jahr stabil.

Lagerungspuffer:
BS mit 50% Glycerin, 0,05% Proclin300, 0,5% BSA, pH 7,3.

Aliquotieren ist nicht notwendig bei -20°C Lagerung

***** 20ul-Größen enthalten 0.1% BSA**

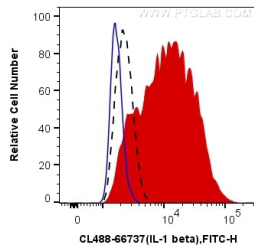
For technical support and original validation data for this product please contact:

T: 1 (888) 4PTGLAB (1-888-478-4522) (toll free in USA), or 1(312) 455-8498 (outside USA)

E: proteintech@ptglab.com
W: ptglab.com

This product is exclusively available under Proteintech Group brand and is not available to purchase from any other manufacturer.

Ausgewählte Validierungsdaten



1X10⁶ THP-1 cells untreated (dashed lines) or treated with LPS (red) were intracellularly stained with 0.4 ug CoraLite® Plus 488 Anti-Human IL-1 beta (CL488-66737, Clone:2A1B4) (red), or 0.4 ug Control Antibody (blue). Cells were fixed with 4% PFA and permeabilized with Flow Cytometry Perm Buffer (PF00011-C).