

Nur für Forschungszwecke

# PTPN11 Monoklonaler Antikörper

Katalog-Nr.:CL488-66795



## Allgemeine Informationen

|   |  |  |
|---|--|--|
| <b>Katalog-Nr.:</b><br>CL488-66795                                      | <b>GenBank-Zugangsnummer:</b><br>BC008692  | <b>Reinigungsmethode:</b><br>Protein-G-Reinigung                   |
| <b>Größe:</b><br>100ul , Konzentration: 1000 µg/ml von5781<br>Nanodrop; | <b>GeneID (NCBI):</b><br>5781  | <b>CloneNo.:</b><br>3F8A8  |
| <b>Wirt:</b><br>Maus  | <b>Vollständiger Name:</b><br>protein tyrosine phosphatase, non-receptor type 11 | <b>Empfohlene Verdünnungen:</b><br>IF 1:50-1:500                   |
| <b>Isotyp:</b><br>IgG1  | <b>Berechnete Masse:</b><br>597 aa, 68 kDa                                       | <b>Anregungs-/Emissionsmaxima-Wellenlängen:</b><br>493 nm / 522 nm |
| <b>Immunogen Katalognummer:</b><br>AG13649                              | <b>Beobachtete Masse:</b><br>68 kDa  |  |

## Anwendungen

|   |   |
|---|---|
| <b>Geprüfte Anwendungen:</b><br>FC (Intra), IF      | <b>Positivkontrollen:</b><br>IF : MCF-7-Zellen, |
| <b>Getestete Reaktivität:</b><br>Human, Maus, Ratte |   |

## Hintergrundinformationen

PTPN11 (protein tyrosine phosphatase, non-receptor type 11) is also named as PTP-1D, PTP2, PTP2C, PTP3, SHP2, CFC, CFC, BPTP3, SH-PTP2, SH-PTP3, MGC14433 and belongs to the protein-tyrosine phosphatase family and non-receptor class 2 subfamily. It modulates and regulates signaling through numerous pathways, many of which are active in the developing endocardial cushions and implicated the ERK pathway as a central mechanism (PMID: 19017799). Its signaling may play equally important roles in retinal survival in both physiological and pathological conditions (PMID: 21576358). Defects in PTPN11 are the cause of LEOPARD syndrome type 1 (LEOPARD1), Noonan syndrome type 1 (NS1), juvenile myelomonocytic leukemia (JMML) and metachondromatosis (MC). It has 3 isoforms produced by alternative splicing.

## Lagerung

**Lagerungsbedingungen:**  
Bei -20°C lagern. Vor Licht schützen. Nach dem Versand ein Jahr stabil.  
**Lagerungspuffer:**  
BS mit 50% Glycerin, 0,05% Proclin300, 0,5% BSA, pH 7,3.  
**Aliquotieren ist nicht notwendig bei -20°C Lagerung**

**\*\*\* 20ul-Größen enthalten 0.1% BSA**

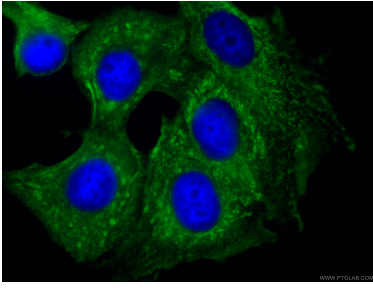
For technical support and original validation data for this product please contact:

T: 1 (888) 4PTGLAB (1-888-478-4522) (toll free in USA), or 1(312) 455-8498 (outside USA)

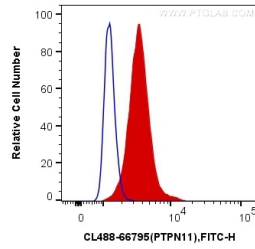
E: proteintech@ptglab.com  
W: ptglab.com

**This product is exclusively available under Proteintech Group brand and is not available to purchase from any other manufacturer.**

## Ausgewählte Validierungsdaten



Immunofluorescent analysis of (-20°C Ethanol) fixed MCF-7 cells using CL488-66795 (PTPN11 antibody) at dilution of 1:100.



1X10<sup>6</sup> MCF-7 cells were intracellularly stained with 0.4 ug CoraLite® Plus 488 Anti-Human PTPN11 (CL488-66795, Clone:3F8A8) (red), or 0.4 ug Mouse IgG1 Isotype Control (CL488-66360, Clone: T1F8D3F10) (blue). Cells were fixed and permeabilized with Transcription Factor Staining Buffer Kit (PF00011).