

Nur für Forschungszwecke

AQP1 Monoklonaler Antikörper

Katalog-Nr.:CL488-66805



Allgemeine Informationen

| | | |
|--|--|---|
| Katalog-Nr.: CL488-66805 | GenBank-Zugangsnummer: BC022486 | Reinigungsmethode: Protein-G-Reinigung |
| Größe: 100ul , Konzentration: 1000 µg/ml von358 Nanodrop; | GeneID (NCBI): aquaporin 1 (Colton blood group) | CloneNo.: 2E5D6 |
| Wirt: Maus | Vollständiger Name: aquaporin 1 (Colton blood group) | Empfohlene Verdünnungen: IF 1:50-1:500 |
| Isotyp: IgG1 | Berechnete Masse: 269 aa, 29 kDa | Anregungs-/Emissionsmaxima- Wellenlängen: 493 nm / 522 nm |
| Immunogen Katalognummer: AG14093 | Beobachtete Masse: 28 kDa, 38-40 kDa | |

Anwendungen

| | |
|---|---|
| Geprüfte Anwendungen: IF | Positivkontrollen: IF : humanes Nierengewebe, |
| Getestete Reaktivität: Hausschwein, Human | |

Hintergrundinformationen

AQP1 is a member of aquaporins (AQPs) that are small membrane-spanning proteins facilitating water transport. AQP1 is expressed in most tissues in the mammalian body. Alterations of AQP1 expression have been linked to variety of diseases, including cancer. The predicted molecular weight of AQP1 is around 28 kDa, while highly glycosylated form can also be observed around 40-45 kDa. (1530176)

Lagerung

Lagerungsbedingungen:
Bei -20°C lagern. Vor Licht schützen.
Lagerungspuffer:
BS mit 50% Glycerin, 0,05% Proclin300, 0,5% BSA, pH 7,3.
Aliquotieren ist nicht notwendig bei -20°C Lagerung

*** 20ul-Größen enthalten 0.1% BSA

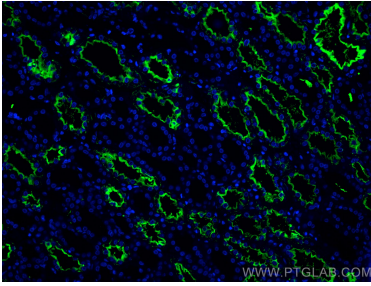
For technical support and original validation data for this product please contact:

T: 1 (888) 4PTGLAB (1-888-478-4522) (toll free
in USA), or 1(312) 455-8498 (outside USA)

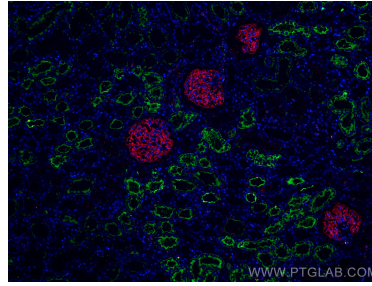
E: proteintech@ptglab.com
W: ptglab.com

This product is exclusively available under Proteintech Group brand and is not available to purchase from any other manufacturer.

Ausgewählte Validierungsdaten



Immunofluorescent analysis of (4% PFA) fixed human kidney tissue using CoraLite® Plus 488 AQP1 antibody (CL488-66805, Clone: 2E5D6) at dilution of 1:200.



Immunofluorescent analysis of (4% PFA) fixed human kidney tissue using CoraLite® Plus 488 AQP1 antibody (CL488-66805, Clone: 2E5D6) at dilution of 1:400, CoraLite® 594 Podocalyxin antibody (CL594-18150, red).