

Nur für Forschungszwecke

EEF1A2 Monoklonaler Antikörper

Katalog-Nr.:CL488-66806



Allgemeine Informationen

Katalog-Nr.: CL488-66806	GenBank-Zugangsnummer: BC000432	Reinigungsmethode: Protein-G-Reinigung
Größe: 100ul , Konzentration: 1000 µg/ml von1917 Nanodrop;	GeneID (NCBI): 1917	CloneNo.: 4F3F4
Wirt: Maus	Vollständiger Name: eukaryotic translation elongation factor 1 alpha 2	Empfohlene Verdünnungen: IF 1:50-1:500
Isotyp: IgG1	Berechnete Masse: 50 kDa	Anregungs-/Emissionsmaxima- Wellenlängen: 493 nm / 522 nm
Immunogen Katalognummer: AG6875	Beobachtete Masse: 48-50 kDa	

Anwendungen

Geprüfte Anwendungen: IF	Positivkontrollen: IF : U2OS-Zellen,
Getestete Reaktivität: Hausschwein, Human, Maus, Ratte	

Hintergrundinformationen

eEF1A2 is one of two isoforms (eEF1A1 and eEF1A2) of eukaryotic elongation factor 1 alpha (eEF1A or eEF1 α). The two isoforms share more than 90% sequence identity and have the similar function that being a protein translation factor involved in protein synthesis. Addition, eEF1A2 plays an important role in cell cycle regulation, heat-shock response, aging, posttranslational modifications, and signal transduction (PMID: 25905039). eEF1A2 is expressed in heart, brain tissue, diaphragm and skeletal muscle while eEF1A1 is expressed ubiquitously (PMID:14588074). And the eEF1A2 protein stimulates the phospholipid signaling and activates the Akt-dependent cell migration and actin remodeling that ultimately favors tumorigenesis. It is reported that eEF1A2 was related with kinds of cancers such as ovarian cancer, prostate cancer, pancreatic cancer, breast cancer and lung cancer (PMID:14588074; 24853801; 25744894; 25905039). An 48 kDa band has also been reported(PMID: 24285179).

Lagerung

Lagerungsbedingungen:
Bei -20°C lagern. Vor Licht schützen. Nach dem Versand ein Jahr stabil.
Lagerungspuffer:
BS mit 50% Glycerin, 0,05% Proclin300, 0,5% BSA, pH 7,3.
Aliquotieren ist nicht notwendig bei -20°C Lagerung

***** 20ul-Größen enthalten 0.1% BSA**

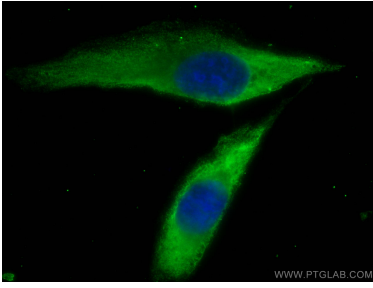
For technical support and original validation data for this product please contact:

T: 1 (888) 4PTGLAB (1-888-478-4522) (toll free
in USA), or 1(312) 455-8498 (outside USA)

E: proteintech@ptglab.com
W: ptglab.com

This product is exclusively available under Proteintech Group brand and is not available to purchase from any other manufacturer.

Ausgewählte Validierungsdaten



Immunofluorescent analysis of (-20°C Methanol) fixed U2OS cells using CoraLite® Plus 488 EEF1A2 antibody (CL488-66806, Clone: 4F3F4) at dilution of 1:200.