

Nur für Forschungszwecke

CDC25C Monoklonaler Antikörper

Katalog-Nr.:CL488-66912



Allgemeine Informationen

| | | |
|--|--|---|
| Katalog-Nr.: CL488-66912 | GenBank-Zugangsnummer: BC019089 | Reinigungsmethode: Protein-G-Reinigung |
| Größe: 100ul , Konzentration: 1000 µg/ml von995 Nanodrop; | GeneID (NCBI): Vollständiger Name: cell division cycle 25 homolog C (S. pombe) | CloneNo.: 2B6B12 |
| Wirt: Maus | Berechnete Masse: 473 aa, 53 kDa | Anregungs-/Emissionsmaxima- Wellenlängen: 493 nm / 522 nm |
| Isotyp: IgG1 | Beobachtete Masse: 46-53 kDa | |
| Immunogen Katalognummer: AG10240 | | |

Anwendungen

Geprüfte Anwendungen:
FC (Intra)

Getestete Reaktivität:
Human, Maus, Ratte

Hintergrundinformationen

The cell division cycle 25 (CDC25) family of proteins are highly conserved dual specificity phosphatases that activate cyclin-dependent kinase (CDK) complexes, which in turn regulate progression through the cell division cycle. CDC25C (cell division cycle 25 homolog C) is one of the 3 isoforms of CDC25 in mammalian cells. It is present in the cytoplasm of asynchronously growing human cells (PMID:10330186). And it may be phosphorylated by its own substrate, an active cdc2-cyclin B complex, to create an autoactivation loop (PMID:7937793). It can be hyperphosphorylated to get the active form of 70 kDa (PMID:18296513). CDC25C has some isoforms with molecular mass of 46-53 kDa.

Lagerung

Lagerungsbedingungen:
Bei -20°C lagern. Vor Licht schützen. Nach dem Versand ein Jahr stabil.
Lagerungspuffer:
BS mit 50% Glycerin, 0,05% Proclin300, 0,5% BSA, pH 7,3.
Aliquotieren ist nicht notwendig bei -20°C Lagerung

*** 20ul-Größen enthalten 0.1% BSA

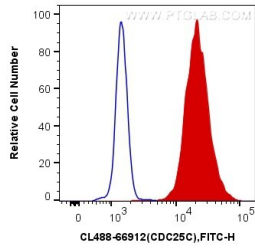
For technical support and original validation data for this product please contact:

T: 1 (888) 4PTGLAB (1-888-478-4522) (toll free
in USA), or 1(312) 455-8498 (outside USA)

E: proteintech@ptglab.com
W: ptglab.com

This product is exclusively available under Proteintech Group brand and is not available to purchase from any other manufacturer.

Ausgewählte Validierungsdaten



1X10⁶ K-562 cells were intracellularly stained with 0.4 ug CoraLite® Plus 488 Anti-Human CDC25C (CL488-66912, Clone:2B6B12) (red), or 0.4 ug Control Antibody. Cells were fixed and permeabilized with Transcription Factor Staining Buffer Kit (PF00011).