

Nur für Forschungszwecke

LGMN Monoklonaler Antikörper

Katalog-Nr.:CL488-67017



Allgemeine Informationen

| | | |
|---|---|--|
| Katalog-Nr.: CL488-67017 | GenBank-Zugangsnummer: BC003061 | Reinigungsmethode: Protein-G-Reinigung |
| Größe: 100ul , Konzentration: 1000 µg/ml von5641 Nanodrop; | GeneID (NCBI): 5641 | CloneNo.: 1F2B12 |
| Wirt: Maus | Vollständiger Name: legumain | Empfohlene Verdünnungen: IF 1:50-1:500 |
| Isotyp: IgG1 | Berechnete Masse: 49 kDa | Anregungs-/Emissionsmaxima-Wellenlängen: 493 nm / 522 nm |
| Immunogen Katalognummer: AG7218 | Beobachtete Masse: 36 kDa | |

Anwendungen

| | |
|--|---|
| Geprüfte Anwendungen: IF | Positivkontrollen: IF : humanes Nierengewebe, |
| Getestete Reaktivität: Human | |

Hintergrundinformationen

LGMN (Legumain), also known as asparaginyl endopeptidase or AEP, is a broadly expressed lysosomal cysteine endopeptidase that belongs to peptidase family C13 and specifically hydrolyzes substrate asparaginyl bonds (PMID: 9065484). LGMN directly regulates diverse physiological and pathological processes by remodeling tissue-specific targets (PMID: 25205715, 21292981, 18820679). In addition, LGMN indirectly contributes to atherosclerotic plaque instability through activation of cathepsin L in the arterial ECM (PMID: 19671471, 18377911). LGMN is secreted as inactive prolegumain (56 kDa) and processed into enzymatically active 46 and 36 kDa forms, as well as a 17 kDa enzymatically inactive C-terminal fragment (PMID: 28162997, PMID: 19671471).

Lagerung

Lagerungsbedingungen:
Bei -20°C lagern. Vor Licht schützen.
Lagerungspuffer:
BS mit 50% Glycerin, 0,05% Proclin300, 0,5% BSA, pH 7,3.
Aliquotieren ist nicht notwendig bei -20°C Lagerung

***** 20ul-Größen enthalten 0.1% BSA**

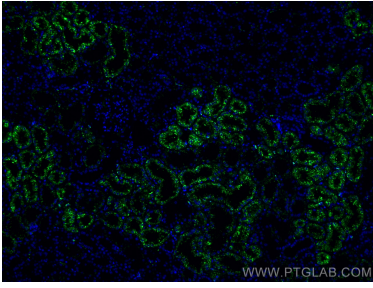
For technical support and original validation data for this product please contact:

T: 1 (888) 4PTGLAB (1-888-478-4522) (toll free in USA), or 1(312) 455-8498 (outside USA)

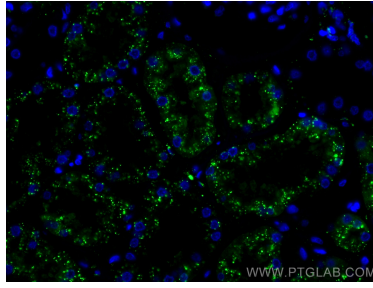
E: proteintech@ptglab.com
W: ptglab.com

This product is exclusively available under Proteintech Group brand and is not available to purchase from any other manufacturer.

Ausgewählte Validierungsdaten



Immunofluorescent analysis of (4% PFA) fixed human kidney tissue using CoraLite® Plus 488 LGMN antibody (CL488-67017, Clone: 1F2B12) at dilution of 1:200.



Immunofluorescent analysis of (4% PFA) fixed human kidney tissue using CoraLite® Plus 488 LGMN antibody (CL488-67017, Clone: 1F2B12) at dilution of 1:200.