

Nur für Forschungszwecke

# NFS1 Monoklonaler Antikörper

Katalog-Nr.:CL488-67021

Vorgestelltes Produkt



## Allgemeine Informationen

<b>Katalog-Nr.:</b> CL488-67021	<b>GenBank-Zugangsnummer:</b> BC018471	<b>Reinigungsmethode:</b> Protein-G-Reinigung
<b>Größe:</b> 100ul , Konzentration: 1000 µg/ml von9054	<b>GeneID (NCBI):</b> von9054	<b>CloneNo.:</b> 3A10A7
<b>Nanodrop;</b>	<b>Vollständiger Name:</b> NFS1 nitrogen fixation 1 homolog (S. cerevisiae)	<b>Empfohlene Verdünnungen:</b> IF 1:50-1:500
<b>Wirt:</b> Maus	<b>Berechnete Masse:</b> 50 kDa	<b>Anregungs-/Emissionsmaxima-Wellenlängen:</b> 493 nm / 522 nm
<b>Isotyp:</b> IgG1	<b>Immunogen Katalognummer:</b> AG8017	

## Anwendungen

<b>Geprüfte Anwendungen:</b> FC (Intra), IF	<b>Positivkontrollen:</b> IF : HeLa-Zellen,
<b>Getestete Reaktivität:</b> Human, Maus, Ratte	

## Hintergrundinformationen

NFS1(nitrogen fixation 1 homolog) is also named as NIFS, HUSSY-08 and belongs to the class-V pyridoxal-phosphate-dependent aminotransferase family. The protein has been identified as a pyridoxal phosphate-containing homodimer that catalyzes the formation of equimolar amounts of elemental sulfur and L-alanine from the substrate, L-cysteine. It is reported that NFS1 is also able to catalyze the removal of selenium from selenocysteine, a mechanism similar to the L-cysteine reaction was postulated(PMID:9812986). It has 2 isoforms produced by alternative initiation.

## Lagerung

**Lagerungsbedingungen:**  
Bei -20°C lagern. Vor Licht schützen. Nach dem Versand ein Jahr stabil.  
**Lagerungspuffer:**  
BS mit 50% Glycerin, 0,05% Proclin300, 0,5% BSA, pH 7,3.  
**Aliquotieren ist nicht notwendig bei -20°C Lagerung**

**\*\*\* 20ul-Größen enthalten 0.1% BSA**

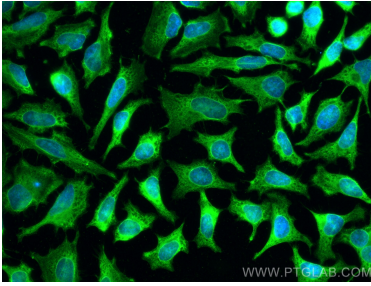
For technical support and original validation data for this product please contact:

T: 1 (888) 4PTGLAB (1-888-478-4522) (toll free in USA), or 1(312) 455-8498 (outside USA)

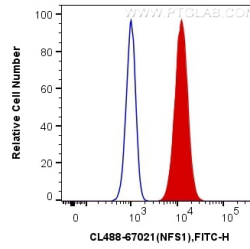
E: [proteintech@ptglab.com](mailto:proteintech@ptglab.com)  
W: [ptglab.com](http://ptglab.com)

**This product is exclusively available under Proteintech Group brand and is not available to purchase from any other manufacturer.**

## Ausgewählte Validierungsdaten



Immunofluorescent analysis of (-20°C Methanol) fixed HeLa cells using Coralite® Plus 488 NFS1 antibody (CL488-67021, Clone: 3A10A7) at dilution of 1:200.



1X10<sup>6</sup> HepG2 cells were intracellularly stained with 0.4 ug Coralite® Plus 488 Anti-Human NFS1 (CL488-67021, Clone:3A10A7) (red), or 0.4 ug x. Cells were fixed with 4% PFA and permeabilized with Flow Cytometry Perm Buffer (PF00011-C).