

Nur für Forschungszwecke

# Endoglin/CD105 Monoklonaler Antikörper

Katalog-Nr.:CL488-67075



## Allgemeine Informationen

<b>Katalog-Nr.:</b> CL488-67075	<b>GenBank-Zugangsnummer:</b> BC014271	<b>Reinigungsmethode:</b> Protein-A-Reinigung
<b>Größe:</b> 100ul , Konzentration: 1000 µg/ml von2022 Nanodrop;	<b>GeneID (NCBI):</b> endoglin	<b>CloneNo.:</b> 2D5E8
<b>Wirt:</b> Maus	<b>Vollständiger Name:</b> endoglin	<b>Empfohlene Verdünnungen:</b> IF 1:50-1:500
<b>Isotyp:</b> IgG2b	<b>Berechnete Masse:</b> 71 kDa	<b>Anregungs-/Emissionsmaxima-Wellenlängen:</b> 493 nm / 522 nm
<b>Immunogen Katalognummer:</b> AG27837	<b>Beobachtete Masse:</b> 95-100 kDa	

## Anwendungen

<b>Geprüfte Anwendungen:</b> FC (Intra), IF	<b>Positivkontrollen:</b> IF : humanes Leberkarzinomgewebe,
<b>Getestete Reaktivität:</b> Human	

## Hintergrundinformationen

Endoglin (ENG, CD105) is a homodimeric cell membrane glycoprotein of 180 kDa, composed of disulphide-linked subunits of 95 kDa. Endoglin is a proliferation-associated and hypoxia-inducible protein mainly expressed on vascular endothelial cells. It acts as an accessory receptor for transforming growth factor beta (TGF-β) and is involved in vascular development and remodelling. The important role of Endoglin in angiogenesis and in tumor progression makes it an ideal target for antiangiogenic therapy and a good marker for tumor prognosis. (PMID: 1326540; 14528280; 21737653; 12773481)

## Lagerung

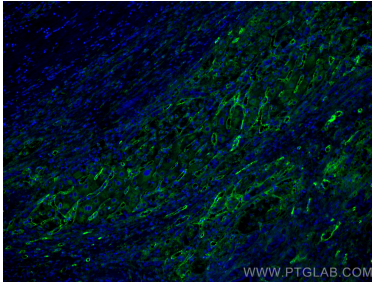
**Lagerungsbedingungen:**  
Bei -20°C lagern. Vor Licht schützen. Nach dem Versand ein Jahr stabil.  
**Lagerungspuffer:**  
BS mit 50% Glycerin, 0,05% Proclin300, 0,5% BSA, pH 7,3.  
**Aliquotieren ist nicht notwendig bei -20°C Lagerung**

**\*\*\* 20ul-Größen enthalten 0.1% BSA**

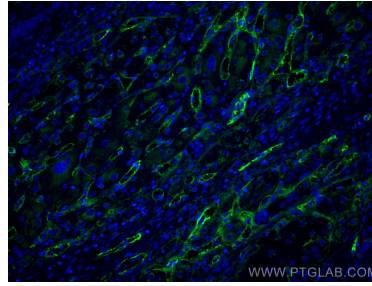
For technical support and original validation data for this product please contact:  
T: 1 (888) 4PTGLAB (1-888-478-4522) (toll free in USA), or 1(312) 455-8498 (outside USA)  
E: proteintech@ptglab.com  
W: ptglab.com

This product is exclusively available under Proteintech Group brand and is not available to purchase from any other manufacturer.

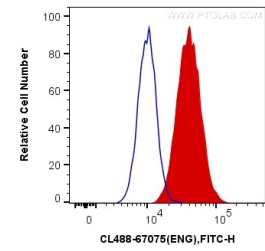
## Ausgewählte Validierungsdaten



Immunofluorescent analysis of (4% PFA) fixed Human liver cancer tissue using CoraLite® Plus 488 Endoglin/CD105 antibody (CL488-67075, Clone: 2D5E8) at dilution of 1:200.



Immunofluorescent analysis of (4% PFA) fixed Human liver cancer tissue using CoraLite® Plus 488 Endoglin/CD105 antibody (CL488-67075, Clone: 2D5E8) at dilution of 1:200.



1X10<sup>6</sup> HUVEC cells were intracellularly stained with 0.4 ug CoraLite® Plus 488 Anti-Human Endoglin/CD105 (CL488-67075, Clone:2D5E8) (red), or 0.4 ug Mouse IgG2b Isotype Control (CL488-66360-3, Clone: K11B8C4B5) (blue). Cells were fixed with 4% PFA and permeabilized with Flow Cytometry Perm Buffer (PF00011-C).