

Nur für Forschungszwecke

# APBB1 Monoklonaler Antikörper

Katalog-Nr.:CL488-67077



## Allgemeine Informationen

<b>Katalog-Nr.:</b> CL488-67077	<b>GenBank-Zugangsnummer:</b> BC010854	<b>Reinigungsmethode:</b> Protein-G-Reinigung
<b>Größe:</b> 100ul , Konzentration: 1000 µg/ml von322 Nanodrop;	<b>GeneID (NCBI):</b> 189G10	<b>CloneNo.:</b> 1B9G10
<b>Wirt:</b> Maus	<b>Vollständiger Name:</b> amyloid beta (A4) precursor protein- binding, family B, member 1 (Fe65)	<b>Empfohlene Verdünnungen:</b> IF 1:50-1:500
<b>Isotyp:</b> IgG1	<b>Berechnete Masse:</b> 708 aa, 77 kDa	<b>Anregungs-/Emissionsmaxima- Wellenlängen:</b> 493 nm / 522 nm
<b>Immunogen Katalognummer:</b> AG27436		

## Anwendungen

<b>Geprüfte Anwendungen:</b> IF	<b>Positivkontrollen:</b> IF : Maushirngewebe,
<b>Getestete Reaktivität:</b> Hausschwein, Human, Maus, Ratte	

## Hintergrundinformationen

APBB1(Amyloid-beta A4 precursor protein-binding family B member 1) encoded FE65 protein. It was known as a binding partner of APP in the Alzheimer's disease studies, and expressed at high levels in brain especially in cerebellum, hippocampus, and cortex. FE65 and FE65-like (FE65L or FE65L1) proteins are cytoplasmic adaptor proteins that possess two phosphotyrosine binding domains (PTB1 and PTB2) and one WW binding domain (PMID:22429478). After phosphorylation modification, the band of FE65 protein would appear around 100 kDa. However, some tested a non-specific band at 55-60 kDa, it was refer to as FE65-like protein(PMID:12843239).

## Lagerung

**Lagerungsbedingungen:**  
Bei -20°C lagern. Vor Licht schützen.  
**Lagerungspuffer:**  
BS mit 50% Glycerin, 0,05% Proclin300, 0,5% BSA, pH 7,3.  
**Aliquotieren ist nicht notwendig bei -20°C Lagerung**

**\*\*\* 20ul-Größen enthalten 0.1% BSA**

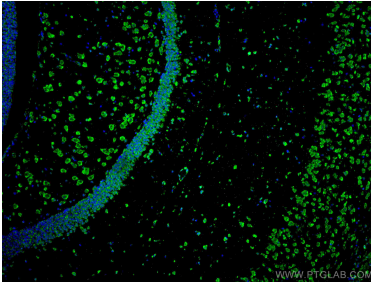
For technical support and original validation data for this product please contact:

T: 1 (888) 4PTGLAB (1-888-478-4522) (toll free  
in USA), or 1(312) 455-8498 (outside USA)

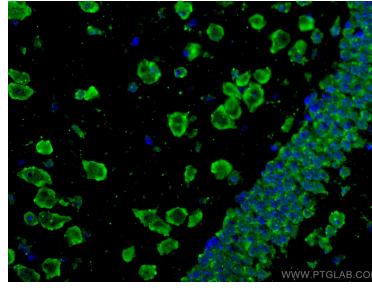
E: proteintech@ptglab.com  
W: ptglab.com

**This product is exclusively available under Proteintech Group brand and is not available to purchase from any other manufacturer.**

## Ausgewählte Validierungsdaten



Immunofluorescent analysis of (4% PFA) fixed mouse brain tissue using CoraLite® Plus 488 APBB1 antibody (CL488-67077, Clone: 1B9G10) at dilution of 1:200.



Immunofluorescent analysis of (4% PFA) fixed mouse brain tissue using CoraLite® Plus 488 APBB1 antibody (CL488-67077, Clone: 1B9G10) at dilution of 1:200.