

Nur für Forschungszwecke

# CES1 Monoklonaler Antikörper

Katalog-Nr.:CL488-67079



## Allgemeine Informationen

|   |  |   |
|---|--|---|
| <b>Katalog-Nr.:</b><br>CL488-67079                                      | <b>GenBank-Zugangsnummer:</b><br>BC012418  | <b>Reinigungsmethode:</b><br>Protein-G-Reinigung                        |
| <b>Größe:</b><br>100ul , Konzentration: 1000 µg/ml von1066<br>Nanodrop; | <b>GeneID (NCBI):</b><br>von1066   | <b>CloneNo.:</b><br>1C11C1  |
| <b>Wirt:</b><br>Maus  | <b>Vollständiger Name:</b><br>carboxylesterase 1<br>(monocyte/macrophage serine<br>esterase 1) | <b>Empfohlene Verdünnungen:</b><br>IF 1:50-1:500                        |
| <b>Isotyp:</b><br>IgG1  | <b>Berechnete Masse:</b><br>566 aa, 62 kDa   | <b>Anregungs-/Emissionsmaxima-<br/>Wellenlängen:</b><br>493 nm / 522 nm |
| <b>Immunogen Katalognummer:</b><br>AG10647                              | <b>Beobachtete Masse:</b><br>60-63 kDa   |   |

## Anwendungen

|  |   |
|--|---|
| <b>Geprüfte Anwendungen:</b><br>IF     | <b>Positivkontrollen:</b><br>IF : HepG2-Zellen, |
| <b>Getestete Reaktivität:</b><br>Human |   |

## Hintergrundinformationen

CES1(liver carboxylesterase 1) is also named as CES2, SES1 and belongs to the type-B carboxylesterase/lipase family. The deduced 567-amino acid protein contains a putative 18-amino acid signal peptide and a characteristic C-terminal endoplasmic reticulum retention signal (HXEL). It is the major hydrolytic enzyme responsible for the metabolism of numerous therapeutic agents as well as endogenous substrates. Western blot analysis demonstrated that CES1 is expressed in human liver microsomes (HLM) but not in human intestinal microsomes (HIM) (PMID:19185566).

## Lagerung

**Lagerungsbedingungen:**  
Bei -20°C lagern. Vor Licht schützen.  
**Lagerungspuffer:**  
BS mit 50% Glycerin, 0,05% Proclin300, 0,5% BSA, pH 7,3.  
Aliquotieren ist nicht notwendig bei -20°C Lagerung

**\*\*\* 20ul-Größen enthalten 0.1% BSA**

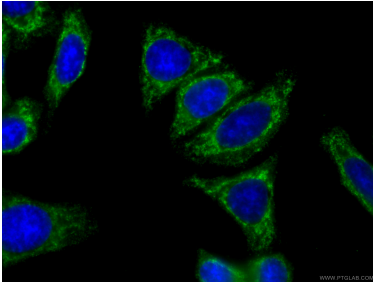
For technical support and original validation data for this product please contact:

T: 1 (888) 4PTGLAB (1-888-478-4522) (toll free  
in USA), or 1(312) 455-8498 (outside USA)

E: proteintech@ptglab.com  
W: ptglab.com

**This product is exclusively available under Proteintech Group brand and is not available to purchase from any other manufacturer.**

## Ausgewählte Validierungsdaten



Immunofluorescent analysis of (-20°C Ethanol) fixed HepG2 cells using CL488-67079 (CES1 antibody) at dilution of 1:100.