

Nur für Forschungszwecke

PICK1 Monoklonaler Antikörper

Katalog-Nr.:CL488-67099



Allgemeine Informationen

Katalog-Nr.: CL488-67099	GenBank-Zugangsnummer: BC017561	Reinigungsmethode: Protein-A-Reinigung
Größe: 100ul , Konzentration: 1000 µg/ml von9463	GeneID (NCBI): von9463	CloneNo.: 2E11A4
Nanodrop;	Vollständiger Name: protein interacting with PRKCA 1	Empfohlene Verdünnungen: IF 1:50-1:500
Wirt: Maus	Berechnete Masse: 47 kDa	Anregungs-/Emissionsmaxima-Wellenlängen: 493 nm / 522 nm
Isotyp: IgG2a	Beobachtete Masse: 50 kDa	
Immunogen Katalognummer: AG28609		

Anwendungen

Geprüfte Anwendungen: IF	Positivkontrollen: IF : HeLa-Zellen,
Getestete Reaktivität: Hausschwein, Human, Maus, Ratte	

Hintergrundinformationen

Protein interacting with C kinase 1 (PICK1) was first cloned as a PKC-binding partner through yeast two hybrid system. PICK1 acts as a critical regulator of membrane receptors' subcellular trafficking to modulate neural processes such as learning and memory, and is widely expressed in brain, testis, heart, lung, liver, kidney and muscle. It probably binds to and organize the subcellular localization of a variety of membrane proteins containing some PDZ recognition sequence, for instance, PICK1 is a critical mediator of α -amino-3-hydroxy-5-methyl-4-isoxazolepropionic acid receptor (AMPA) trafficking in neural synapses. PICK1 expression on D-serine release and glutamate transport in astrocytes suggests a potential implication of PICK1 in the progression of amyotrophic lateral sclerosis (ALS). PICK1 may also participate in breast cancer development through inhibition of TGF- β signaling.

Lagerung

Lagerungsbedingungen:
Bei -20°C lagern. Vor Licht schützen.
Lagerungspuffer:
BS mit 50% Glycerin, 0,05% Proclin300, 0,5% BSA, pH 7,3.
Aliquotieren ist nicht notwendig bei -20°C Lagerung

*** 20ul-Größen enthalten 0.1% BSA

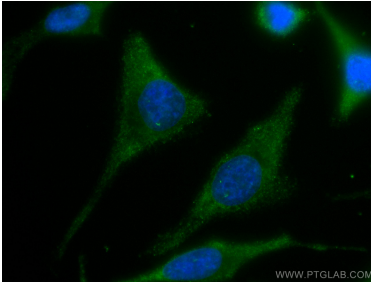
For technical support and original validation data for this product please contact:

T: 1 (888) 4PTGLAB (1-888-478-4522) (toll free in USA), or 1(312) 455-8498 (outside USA)

E: proteintech@ptglab.com
W: ptglab.com

This product is exclusively available under Proteintech Group brand and is not available to purchase from any other manufacturer.

Ausgewählte Validierungsdaten



Immunofluorescent analysis of (-20°C Ethanol) fixed HeLa cells using CoraLite® Plus 488-conjugated PICK1 antibody (CL488-67099, Clone: 2E11A4) at dilution of 1:100.