

Nur für Forschungszwecke

FLNA Monoklonaler Antikörper

Katalog-Nr.:CL488-67133



Allgemeine Informationen

Katalog-Nr.: CL488-67133	GenBank-Zugangsnummer: BC014654	Reinigungsmethode: Protein-A-Reinigung
Größe: 100ul , Konzentration: 1000 µg/ml von2316 Nanodrop;	GeneID (NCBI): 1G4H3	CloneNo.: 1G4H3
Wirt: Maus	Vollständiger Name: filamin A, alpha (actin binding protein 280)	Empfohlene Verdünnungen: IF 1:200-1:800
Isotyp: IgG2a	Berechnete Masse: 2647 aa, 280 kDa	Anregungs-/Emissionsmaxima- Wellenlängen: 493 nm / 522 nm
Immunogen Katalognummer: AG23291	Beobachtete Masse: 280 kDa	

Anwendungen

Geprüfte Anwendungen: IF	Positivkontrollen: IF : HeLa-Zellen,
Getestete Reaktivität: Human	

Hintergrundinformationen

FLNA encodes a 280 kDa widely expressed actin binding protein called filamin A which can crosslinks actin filaments and links actin filaments to membrane glycoproteins to form a three-dimensional network (PMID: 29931263). And filamin A could interact with many other proteins, involved in receptor activation, cell migration and adhesion, cell proliferation, inflammation and tumorigenesis, studies have been reported that FLNA overexpressed in multiple types of tumors, suggesting FLNA may involved in cancer aggressiveness(PMID: 29100390). What's more, FLNA is a causative gene of periventricular nodular heterotopia (PNH) (PMID: 29062687)

Lagerung

Lagerungsbedingungen:
Bei -20°C lagern. Vor Licht schützen.
Lagerungspuffer:
BS mit 50% Glycerin, 0,05% Proclin300, 0,5% BSA, pH 7,3.
Aliquotieren ist nicht notwendig bei -20°C Lagerung

***** 20ul-Größen enthalten 0.1% BSA**

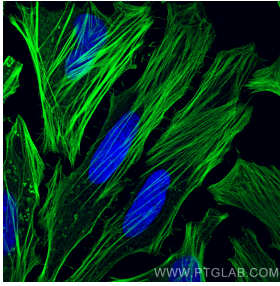
For technical support and original validation data for this product please contact:

T: 1 (888) 4PTGLAB (1-888-478-4522) (toll free
in USA), or 1(312) 455-8498 (outside USA)

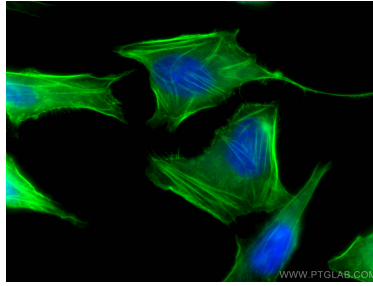
E: proteintech@ptglab.com
W: ptglab.com

This product is exclusively available under Proteintech Group brand and is not available to purchase from any other manufacturer.

Ausgewählte Validierungsdaten



Immunofluorescent analysis of (-20°C Methanol) fixed HeLa cells using CoraLite® Plus 488 FLNA antibody (CL488-67133, Clone: 1G4H3) at dilution of 1:200.



Immunofluorescent analysis of (-20°C Ethanol) fixed HeLa cells using CoraLite® Plus 488-conjugated FLNA antibody (CL488-67133, Clone: 1G4H3) at dilution of 1:400.