

Nur für Forschungszwecke

ENO1 Monoklonaler Antikörper

Katalog-Nr.:CL488-67187



Allgemeine Informationen

Katalog-Nr.: CL488-67187	GenBank-Zugangsnummer: BC015641	Reinigungsmethode: Thiophiler Affinitätschromatograph
Größe: 100ul , Konzentration: 1000 µg/ml von2023 Nanodrop;	GeneID (NCBI): enolase 1, (alpha)	CloneNo.: 1D6E8
Wirt: Maus	Vollständiger Name: enolase 1, (alpha)	Empfohlene Verdünnungen: IF 1:50-1:500
Isotyp: IgM	Berechnete Masse: 47 kDa	Anregungs-/Emissionsmaxima-Wellenlängen: 493 nm / 522 nm
Immunogen Katalognummer: AG17518	Beobachtete Masse: 47 kDa	

Anwendungen

Geprüfte Anwendungen: IF	Positivkontrollen: IF : HepG2-Zellen,
Getestete Reaktivität: Hausschwein, Human, Maus, Ratte	

Hintergrundinformationen

ENO1, also named as NNE, ENO1L1, MBPB1, MPB1 and MBP1, belongs to the enolase family. ENO1 is a metabolic enzyme involved in the synthesis of pyruvate. It also acts as a plasminogen receptor and mediates the activation of plasmin and extracellular matrix degradation. In tumor cells, ENO1 is up-regulated and supports the Warburg effect; it is expressed at the cell surface, where it promotes cancer invasion, and is subjected to a specific array of post-translational modifications, namely acetylation, methylation and phosphorylation. ENO1 overexpression and post-translational modifications could be of diagnostic and prognostic value in many cancer types. (PMID: 27814656)

Lagerung

Lagerungsbedingungen:
Bei -20°C lagern. Vor Licht schützen. Nach dem Versand ein Jahr stabil.
Lagerungspuffer:
BS mit 50% Glycerin, 0,05% Proclin300, 0,5% BSA, pH 7,3.
Aliquotieren ist nicht notwendig bei -20°C Lagerung

***** 20ul-Größen enthalten 0.1% BSA**

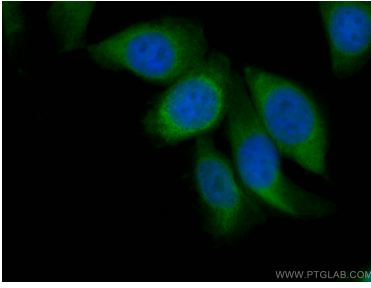
For technical support and original validation data for this product please contact:

T: 1 (888) 4PTGLAB (1-888-478-4522) (toll free in USA), or 1(312) 455-8498 (outside USA)

E: proteintech@ptglab.com
W: ptglab.com

This product is exclusively available under Proteintech Group brand and is not available to purchase from any other manufacturer.

Ausgewählte Validierungsdaten



Immunofluorescent analysis of (4% PFA) fixed HepG2 cells using CoraLite® Plus 488-conjugated ENO1 antibody (CL488-67187, Clone: 1D6E8) at dilution of 1:100.