

Nur für Forschungszwecke

SERCA2,ATP2A2 Monoklonaler Antikörper

Katalog-Nr.:CL488-67248



Allgemeine Informationen

| | | |
|--|---|---|
| Katalog-Nr.: CL488-67248 | GenBank-Zugangsnummer: BC035588 | Reinigungsmethode: Protein-G-Reinigung |
| Größe: 100ul , Konzentration: 1000 µg/ml von488 Nanodrop; | GeneID (NCBI): 1042 | CloneNo.: 1F11A11 |
| Wirt: Maus | Vollständiger Name: ATPase, Ca++ transporting, cardiac muscle, slow twitch 2 | Anregungs-/Emissionsmaxima- Wellenlängen: 493 nm / 522 nm |
| Isotyp: IgG1 | Berechnete Masse: 1042 aa, 115 kDa | |
| Immunogen Katalognummer: AG5052 | Beobachtete Masse: 120 kDa | |

Anwendungen

Geprüfte Anwendungen:
FC (Intra)

Getestete Reaktivität:
Human, Maus, Ratte

Hintergrundinformationen

ATP2A2, also known as SERCA2 (Sarco/endoplasmic reticulum-type calcium transport ATPase 2), is a 110 kDa magnesium-dependent enzyme catalyzing the hydrolysis of ATP coupled with the translocation of calcium from the cytosol to the sarcoplasmic reticulum lumen. Human SERCA2 gene gives rise to several alternatively spliced isoforms: SERCA2a, SERCA2b and SERCA2c. SERCA2a and SERCA2c are mainly expressed in cardiac muscle, while SERCA2b is ubiquitously expressed in all cell types.

Lagerung

Lagerungsbedingungen:
Bei -20°C lagern. Vor Licht schützen. Nach dem Versand ein Jahr stabil.

Lagerungspuffer:
BS mit 50% Glycerin, 0,05% Proclin300, 0,5% BSA, pH 7,3.

Aliquotieren ist nicht notwendig bei -20°C Lagerung

***** 20ul-Größen enthalten 0.1% BSA**

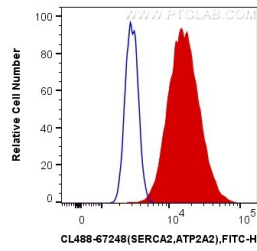
For technical support and original validation data for this product please contact:

T: 1 (888) 4PTGLAB (1-888-478-4522) (toll free
in USA), or 1(312) 455-8498 (outside USA)

E: proteintech@ptglab.com
W: ptglab.com

This product is exclusively available under Proteintech Group brand and is not available to purchase from any other manufacturer.

Ausgewählte Validierungsdaten



1X10⁶ HeLa cells were intracellularly stained with 0.4 ug Coralite® Plus 488 Anti-Human SERCA2,ATP2A2 (CL488-67248, Clone:1F11A11) (red), or 0.4 ug x. Cells were fixed with 4% PFA and permeabilized with Flow Cytometry Perm Buffer (PF00011-C).